

Workshop Trolley | 8 Drawers | with 263 Tools

- consisting of workshop trolley BGS 4108 incl. 4 tool trays, 3/3, made from high-resistance foam (dimensions 567 x 408 x 32 mm)
 - wall thickness body: 1.6 mm
 - wall thickness drawers: 1.3 mm
 - heavy duty 125 mm ball bearing castors, thereof 2 castors lockable
 - lockable through central lock
 - each drawer individually secured, with safety lock
 - drawer 1 - 8 drawer capacity: each 35 kg
 - stable top plastic support with 5 storage compartments, load capacity up to 45 kg
 - BGS Logo with red LEDs on the front panel, switch is inside the side panel
 - side door individually lockable
 - side storage with 2 trays e.g. for cans, tools or bottles and a tool board inside the door with hook holes for tools
 - with rear board individually lockable and extendable
 - hook holes on the rear board for tools (10 hooks included), control panel with control device and bluetooth speaker with internal antenna incl. USB charging cable
 - easy connection via bluetooth with mobile phone or other devices
 - side mounted handle
- 1 Tool Tray 3/3: Beer, Chips and Peanuts | 9 pcs. (BGS 4190)
- 1 Tool Tray 3/3: Socket Set | 192 pcs. (BGS 4036)
- 1 Tool Tray 3/3: Hammer, Pliers, Screwdriver Set | 36 pcs. (BGS 4038)
- 1 Tool Tray 3/3: Open End / Ring Spanners | 35 pcs. (BGS 4089)
- 1 Microfibre Cloth | 400 x 400 mm (BGS TUCH)
- width: 752 mm
- height: 984 mm
- depth: 540 mm
- number of drawers: 8
- drawer width: 568 mm
- drawer depth: 409 mm
- drawer height: 7 x 58 | 1 x 139 mm
- drawer pull-out: 100 %



New Items October (customers only)

Item #
4106



VDE Reversible Ratchets | 1000 V

10  3/8 12.5  1/2

- DIN EN 60900
- VDE insulated up to 1000 V
- with quick release
- output profile: external square
- handle type: VDE insulated
- BGS 701: drive profile size: 10 mm (3/8"), no. of teeth in ratchet head: 72, length: 200 mm
- BGS 702: drive profile size: 12.5 mm (1/2"), no. of teeth in ratchet head: 45, length: 230 mm



Item #	Description
701	VDE Reversible Ratchet Fine Tooth 10 mm (3/8") 1000 V
702	VDE Reversible Ratchet 12.5 mm (1/2") 1000 V



VDE Bit Socket Set | 12.5 mm (1/2") Drive | T-Star (for Torx) T20 - T55 | 10 pcs. 12.5 1/2

- DIN EN 60900
- VDE insulated up to 1000 V
- handle type: VDE insulated

scope of delivery:

- 1 bit socket T-Star (for Torx) T20, length: 95 mm
- 1 bit socket T-Star (for Torx) T25, length: 95 mm
- 1 bit socket T-Star (for Torx) T27, length: 95 mm
- 1 bit socket T-Star (for Torx) T30, length: 95 mm
- 1 bit socket T-Star (for Torx) T40, length: 95 mm
- 1 bit socket T-Star (for Torx) T45, length: 95 mm
- 1 bit socket T-Star (for Torx) T47, length: 95 mm
- 1 bit socket T-Star (for Torx) T50, length: 95 mm
- 1 bit socket T-Star (for Torx) T55, length: 95 mm
- 1 T-handle, length: 205 mm, output profile: external square, drive profile size: 12.5 mm (1/2")

Item #
7131



New Items October (customers only)

VDE Bit Socket Set | 10 mm (3/8") / 12.5 mm (1/2") Drive | Internal Hexagon 4 - 10 mm | 10 pcs. 10 3/8 12.5 1/2

- DIN EN 60900
- VDE insulated up to 1000 V
- handle type: VDE insulated

scope of delivery:

- 1 bit socket internal hexagon, 4 mm, 10 mm (3/8"), length: 68 mm
- 1 bit socket internal hexagon, 5 mm, 10 mm (3/8"), length: 68 mm
- 1 bit socket internal hexagon, 6 mm, 10 mm (3/8"), length: 68 mm
- 1 bit socket internal hexagon, 7 mm, 10 mm (3/8"), length: 68 mm
- 1 bit socket internal hexagon, 6 mm, 12.5 mm (1/2"), length: 92 mm
- 1 bit socket internal hexagon, 7 mm, 12.5 mm (1/2"), length: 92 mm
- 1 bit socket internal hexagon, 8 mm, 12.5 mm (1/2"), length: 92 mm
- 1 bit socket internal hexagon, 10 mm, 12.5 mm (1/2"), length: 92 mm
- 1 T-handle, output profile: external square, drive profile size: 10 mm (3/8"), 12.5 mm (1/2"), length: 205 mm
- 1 adapter, 12.5 mm (1/2") drive, internal hexagon 10 mm (3/8"), length: 92 mm



Item #
7132



VDE Socket Set | 10 mm (3/8") Drive | 7 - 22 mm | 12 pcs. 10 3/8

- DIN EN 60900
- VDE insulated up to 1000 V
- handle type: VDE insulated

scope of delivery:

- 1 socket, hexagon 7 mm, length: 72 mm
- 1 socket, hexagon 8 mm, length: 72 mm
- 1 socket, hexagon 10 mm, length: 72 mm
- 1 socket, hexagon 12 mm, length: 72 mm
- 1 socket, hexagon 14 mm, length: 72 mm
- 1 socket, hexagon 15 mm, length: 72 mm
- 1 socket, hexagon 17 mm, length: 72 mm
- 1 socket, hexagon 19 mm, length: 72 mm
- 1 T-handle, output profile: external square, drive profile size: 10 mm (3/8"), length: 210 mm
- 1 extension bar, length: 118 mm
- VDE Reversible Ratchet | Fine Tooth | 6.3 mm (1/4") | 1000 V, with quick release, no. of teeth in ratchet head: 72, length: 200 mm (BGS 701)



Item #
7133



VDE Socket Set | 12.5 mm (1/2") Drive | 10 - 24 mm | 11 pcs.**12.5**  **1/2**

- DIN EN 60900
- VDE insulated up to 1000 V
- handle type: VDE insulated

scope of delivery:

- 1 socket, hexagon 10 mm, length: 92 mm
- 1 socket, hexagon 12 mm, length: 92 mm
- 1 socket, hexagon 13 mm, length: 92 mm
- 1 socket, hexagon 14 mm, length: 92 mm
- 1 socket, hexagon 17 mm, length: 92 mm
- 1 socket, hexagon 19 mm, length: 92 mm
- 1 socket, hexagon 22 mm, length: 92 mm
- 1 socket, hexagon 24 mm, length: 92 mm
- 1 T-handle, length: 205 mm
- 1 extension bar, output profile: external square, drive profile size: 12.5 mm (1/2"), length: 142 mm
- 1 VDE Reversible Ratchet | 12.5 mm (1/2") | 1000 V, with quick release, no. of teeth in ratchet head: 45, length: 230 mm (BGS 702)



Item #
7134

**Ratchet Wrench Set | 8 - 13 mm | 6 pcs.**

- fine toothed, 72 teeth
- surface finish: satin chrome plated

scope of delivery:

- 1 Ratcheting Combination Wrench 8 mm (BGS 6508)
- 1 Ratcheting Combination Wrench 9 mm (BGS 6509)
- 1 Ratcheting Combination Wrench 10 mm (BGS 6510)
- 1 Ratcheting Combination Wrench 11 mm (BGS 6511)
- 1 Ratcheting Combination Wrench 12 mm (BGS 6512)
- 1 Ratcheting Combination Wrench 13 mm (BGS 6513)
- 1 Empty Case for BGS 1/6 Tool Trays (BGS BOX16)

Item #
6502


New Items October (customers only)

Protective Impact Socket Set | Ultra Slim | 12.5 mm (1/2") Drive | 17 / 19 / 21 mm | 3 pcs. **12.5** 1/2

- very robust type
- for both manual and impact wrenches
- can be fixed on impact wrench by pin and O-ring
- plastic cover and plastic sleeve for protection of aluminium rims
- different socket colors help to indicate the right size
- length: 86 mm
- 12,5 mm (1/2") drive

scope of delivery:

- 1 Protective Impact Socket | Ultra Slim | 12.5 mm (1/2") Drive | 17 mm (BGS 7402)
- 1 Protective Impact Socket | Ultra Slim | 12.5 mm (1/2") Drive | 19 mm (BGS 7403)
- 1 Protective Impact Socket | Ultra Slim | 12.5 mm (1/2") Drive | 21 mm (BGS 7404)



Item #	Description
7400	Protective Impact Socket Set Ultra Slim 12.5 mm (1/2") drive 17 / 19 / 21 mm 3 pcs.
7401	Protective Impact Socket Set Ultra Slim 12.5 mm (1/2") drive 15 mm
7402	Protective Impact Socket Set Ultra Slim 12.5 mm (1/2") drive 17 mm
7403	Protective Impact Socket Set Ultra Slim 12.5 mm (1/2") drive 19 mm
7404	Protective Impact Socket Set Ultra Slim 12.5 mm (1/2") drive 21 mm
7405	Protective Impact Socket Set Ultra Slim 12.5 mm (1/2") drive 22 mm



OBD II (EOBD) Error Code Diagnostic Tool

- allows reading and deleting OBDII trouble codes
- no trouble code list required, all trouble codes are displayed in plain text
- viewing the freeze frame values is an important feature to locate a fault
- reading of readiness codes indicates if emission systems are ready or not
- enables reading live data, various parameters are shown in real time
- power supply via vehicle OBDII connector (DLC)
- easy to use
- menu languages: German, English, French, Spanish, Italian
- OBDII error codes = motor control error codes, a reading of comfort and safety systems such as airbags, ABS, radio, heated seats, etc. not possible



Item #
6648



Brake Piston Reset Tool | universal Type

- for pushing brake pistons back into the caliper
- suitable for multi-piston fixed calipers
- resetting range: 10 - 90 mm
- size of resetting plates 100 x 40 mm
- spindle drive: 10 mm outer hexagon



Item #
6755

Brake Piston Reset Adaptor Set | universal | with 2 & 3 Pins | 2 pcs.

10 3/8

- for resetting the brake pistons with 2, 3 or 4 grooves
- universally applicable, suitable for a variety of vehicle models
- distance of the pins is adjustable
- usage range: 20 - 35 mm
- drive: 10 mm (3/8") inner square
- material: carbon steel

Item #	Description
6661	Brake Piston Reset Adaptor Set universal with 2 & 3 Pins 2 pcs.
6661-2	Brake Piston Reset Adaptor Set universal with 2 Pins
6661-3	Brake Piston Reset Adaptor Set universal with 3 Pins



New Items October (customers only)

Engine Timing Tool Set | for VAG 1.4 / 1.6 / 2.0 TDI Common Rail

- set for setting and checking the engine timing

suitable for 1.4 - 1.6 - 2.0 TDI Common Rail Diesel engines, as in the following models:

- Audi A1 / A1 Sportback (8XA) / A3 (8V1) / A3 Cabriolet (8V7) / A3 Limousine (8VS) / A3 Sportback (8VA) / TT (FV3) / TT Roadster (FV9)
- Seat Ibiza V(6J5) / Ibiza V Sportcoupe (6J1) / Ibiza V ST (6J8) / Leon (5F_) / Leon SC (5F5) / Leon ST (5F8) / Toledo IV (KG3)
- Skoda Fabia (NJ3) / Fabia Kombi (NJ5) / Octavia (5E3) / Octavia Combi (5E5) / Rapid / Rapid Spaceback (NH1)
- Volkswagen Golf Alltrack (BA5) / Golf Sportsvan (AM1) / Golf VII / Golf VII station wagon (BA5) / Passat (3G2) / Passat (3G5) / Polo (6R_)

engine codes:

- CXXB / DBKA / DCXA / CGLE / CKFB / CKFC / CLHA / CLHB / CNHA / CNHC / CRBD / CRFA / CRFC / CRKA / CRKB / CRLB / CRLC / CRMB / CRUA / CRVA / CRVC / CSUA / CSUB / CUNA / CUPA / CUSA / CUSB / CUTA / CUUD / CXEB / DBKA / DCXA / DCZA / DFSD

scope of delivery:

- camshaft counterholding tool, to be used as OEM T10051
- 2 injection pump and camshaft locking pins, to be used as OEM 3359
- belt tensioner locking pin, to be used as OEM T10060a / T40098 / 3204
- internal hexagon wrench, to be used as OEM T10264
- idler / tensioner locking tool, to be used as OEM T10265
- 2 high pressure pump and camshaft locking pins, to be used as OEM T10492
- crankshaft adjusting tool, to be used as OEM T10490



Item #

9208

Flywheel Locking Tool | for BMW / MINI

- for holding the flywheel when loosening and tightening the crankshaft pulley and flywheel itself
- suitable for BMW / MINI engines N40, N42, N43, N45(T), N46(T), N51, N52, N53, N54, N62, N73, M47TU, M54, M57T2(TU), S85, W17
- to be used as OEM 11 9 260, 11 9 261, 11 9 262, 11 9 263, 11 9 264, 11 9 265, 11 9 266

scope of delivery:

- 1 counterholder
- 2 spacer sleeves
- 1 reducing sleeve
- 3 fixing screws

Item #

6694



Transmission Oil Filling Adaptor Set | 13 pcs.

- suitable for filling of manual and automatic transmissions
- fits on oil filling devices BGS 8775, 9992, 9991

includes the following 13 adaptors:

- adaptor for VW, MINI, Audi, M10 x 1 ATF-105
- adaptor for Ford, 1/8" x 27NPT ATF-101
- adaptor for Audi, VW, Skoda ATF-103
- adaptor for Porsche, VW, Audi ATF-104
- universal adaptor for e. g. BMW, Honda, Nissan etc. ATF-102
- adaptor for Mercedes-Benz 722, Altis 2010, M12 x 1.5 ATF-109
- adaptor for VW, Audi CVT, M22 x 1.5 ATF-107
- adaptor for VW, Audi DSG, M24 x 1.5 ATF-106
- adaptor for Skoda, Audi, VW, M30 x 1.5 ATF-110
- adaptor for Toyota, Lexus, M18 x 1.5 ATF-113
- adaptor for Skoda, VW, M18 x 1.5 ATF-108
- flexible adaptor, universal, for e.g. Honda, Kia, Hyundai, etc. 300 mm ATF-111
- adaptor for Nissan, Infinity, M8 x 1 ATF-112



Item #
9992-4

Thread Repair Kit for Wheel Studs & Wheel Nuts | M12 & M14 | 8 pcs.

- for repairing damaged wheel stud and wheel nuts (internal and external threads)
- 2-piece re-cutting, this allows positioning of the dies behind the damaged thread part
- suitable for passenger vehicles and light commercial vehicles
- fits for vehicle models PSA, Mercedes-Benz, BMW, Volvo and VAG

scope of delivery:

- 1 die, M12 x 1.25
- 1 die, M12 x 1.5
- 1 die, M14 x 1.5
- 1 die holder, 24 mm drive
- 1 tap, M12 x 1.25 drive
- 1 tap, M12 x 1.5 drive
- 1 tap, M12 x 1.75 drive
- 1 tap, M14 x 1.5 drive



Item #
8692



Injector Extractor Set | for Trucks | 4pcs.

- for extracting of Bosch and Delphi pump-nozzle-units and traditional truck injectors
- suitable for truck models from Volvo, Scania, Mercedes-Benz, Man, Renault and Iveco

scope of delivery:

- sliding hammer rod with handle
- sliding hammer
- pulling adaptor
- pulling hook



Item #
6662

Door Handle Dismantling Tool | for VW

- for disassembling door handles without cylinder lock
- allows a quick and easy disassembly of the hard to reach locking hook

suitable for the following VAG models:

- VW Arteon (2017-), Caddy (2016-), Golf Sportsvan (2015-), Passat (2015-), Tiguan (2016-), Touran (2016-) and Audi Q2 (2016-)
- to be used as OEM T10539



Item #
6699



Hydraulic Spring Tensioner Station

- driven by a hydraulic pump, it delivers fast and powerful compression in just 23 seconds
- constant and even compression ensures absolutely safe removal of the spring
- compact and robust safety cage for optimum safety, the spring can only be tensioned when the safety cage is closed
- for maximum functionality in your daily work you can position the spring holders correctly on the spring windings with the safety cage open
- pedal operation keeps hands free for safe and flexible work
- suitable for mobile use, easy to maneuver
- the height adjustable strut carrier also accommodates tools, accessories and individual replacement parts
- maximum security and unlimited functionality
- incl. integrated spring tensioner and universal spring holder Ø 80 - 200 mm
- max. load: 2500 kg
- weight: 102 kg
- dimensions: 1630 x 794 x 670 mm



Item #
6887



Floor Jack | hydraulic | 3 t | with Quick Lift Pedal

- quick lift possible with separate foot pedal
- quick-lift pedal to be mounted separately as needed
- rated load capacity: 3 t
- min. lifting height: 145 mm
- max. lifting height.: 500 mm
- lifting height at nominal load: 340 - 500 mm
- stroke: 355 mm
- length: 685 mm
- weight: 37.2 kg
- support pad Ø: 120 mm
- 2 rigid castors, 2 swivel castors

Item #
9251



Multi Purpose Funnel | for Urea (AUS 32) | straight

- suitable for refilling urea additives AdBlue® (AUS 32)
- straight execution
- with plastic cover to protect against dust and dirt
- suitable for the urea tank connection
- with shut-off valve when the tank is full
- embossed level indicator on transparent plastic container
- dripless
- material: plastic
- capacity: 1.1 l

Item #
9702



Multi Purpose Funnel | for Urea (AUS 32) | angled

- suitable for refilling urea additives AdBlue® (AUS 32)
- angled version
- with plastic cover to protect against dust and dirt
- suitable for the urea tank connection
- with shut-off valve when the tank is full
- embossed level indicator on transparent plastic container
- dripless
- material: plastic
- capacity: 1.1 l

Item #
9731



Digital Tyre Pressure Gauge & Tyre Depth Gauge | "2-IN-1"

- ideal tool for easy measuring tire pressure and tread depth
- tire pressure gauge with LCD display
- display background ensures optimal display of air pressure even in the dark
- profile depth gauge in the handle comes with metric and inch display
- lightweight type
- compact structure
- measuring range: 0.2 - 6.9 Bar (3.0 - 99.5 PSI)
- accuracy: +/- 0.1 Bar (1.5 PSI)
- resolution: 0.05 Bar (0.5 PSI)
- measuring units: PSI, BAR, kPa, kg/cm²
- auto power off: about 85 seconds after last measurement
- battery: 2 x 1.5V, LR44
- working temperature: 0 - 50 °C
- storage temperature: -10 - 55 °C
- size: 135 x 50 x 32 mm
- weight: about 60g (incl. battery)



Item #
6647



Plastic Double Ring Spanner & Pry Bar Set | 5 pcs.

- ideal for classic cars and high quality vehicles
- prevents damage to chrome-plated or anodised screws, nuts, trim strips, ornamental rings, wheel covers, etc.
- made of composite plastic

scope of delivery:

- 4 double ring spanners, output profile: hexagon, sizes: 6, 8, 10, 12, 13 mm, 3/8", 7/16", 1/2"
- 1 pry bar

Item #
6663



Motorcycle Special Socket | 10 mm (3/8") | 12 - 24 mm

10 3/8

- 6 different internal hexagon sizes: 12 - 14 - 17 - 19 - 22 - 24 mm
- suitable for Yamaha, Kawasaki, BMW, Suzuki, Honda

scope of delivery:

- 1 special socket 17 - 19 - 22 - 24 mm
- 1 adapter with retaining ball 12 mm, length: 112 mm
- 1 adapter with retaining ball 14 mm, length: 112 mm

Item #
5058-1



Fuel Line Pliers | with Bowden Cable | 650 mm

- for correct release of locking mechanism on plastic quick couplers
- with locking and bowden cable
- suitable for button connectors on fuel systems, reservoirs of urea, brake fluid and power steering, etc.
- allows quick and easy separation of the fuel pipes
- jaws range: 3 to 32 mm
- length of bowden cable: 650 mm
- handle type: PVC dipped handles



Item #
6756



Workshop Seat | with 2 shelf plates | ABS | 440 x 350 mm

- facilitates maintenance or service work on vehicles
- height individually adjustable
- height: 380 - 500 mm
- stroke: 120 mm
- seat size: 440 x 350 mm
- seat material: ABS plastic
- diameter (shelf plate): 300 mm
- diameter (bottom plate): 370 mm
- capacity: max. 135 kg
- quantity of castors: 5 pcs.
- castor diameter: 63.5 mm
- castor material: polypropylene (PP)



Item #
6820





Torque Wrench | 12.5 mm (1/2") | 40 - 210 Nm

12.5  1/2

- 24 teeth
- reversible ratchet
- for setting the torque on screw connections with right-hand thread
- click signal when torque is reached
- locks the set torque value
- length: 467 mm
- effective length: 390 mm



Item #
957

Glue Sticks | transparent | Ø 11 mm, 200 mm | 8 pcs.

- geeignet für Heißklebepistole BGS 8050
- 8 Klebestifte, Ø 11 x 200 mm
- Farbe: transparent

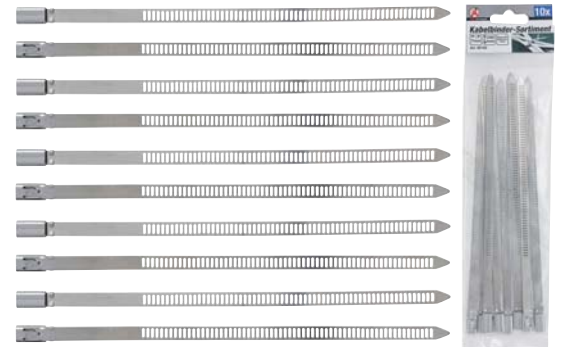


Item #
80857



Cable Tie Assortment | Stainless Steel | 7.0 x 200 mm | 10 pcs.

- suitable for outdoor, in use moisture, high temperature and other outdoor applications
- bundle diameter max. 55 mm
- special locking system
- anti-magnetic
- not burning
- corrosion resistant / weather resistant
- length: 200 mm
- width: 7 mm
- color: metallic silver
- stepped construction
- material: stainless steel



Item #
80780





Security Cilinder Locks | with Knob

- with knob
- with 5 keys
- door cylinder screws 35 x 85 mm
- chrome / silver



Item #	Description
85260	Security Cylinder Lock with Rotary Knob 60 mm
85270	Security Cylinder Lock with Rotary Knob 70 mm
85280	Security Cylinder Lock with Rotary Knob 80 mm

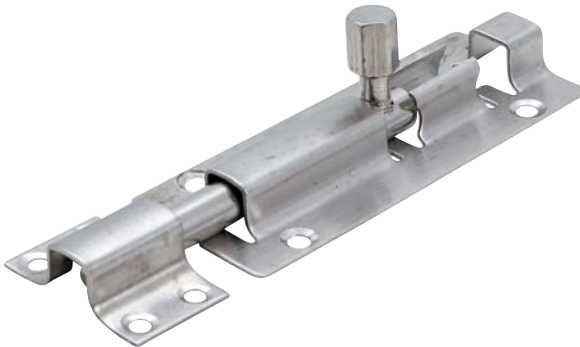


Lock Bolts | Stainless Steel

- versatile application
- with loop
- with button handle
- with retractable screw holes
- lateral locking prevents unwanted loosening
- without screws



Item #	Description
88081	Lock Bolt Stainless Steel 100 mm
88082	Lock Bolt Stainless Steel 150 mm
88083	Lock Bolt Stainless Steel 200 mm



New Items October (customers only)