
System Case | BGS systainer® T-Loc 1

- intelligent transport and storage system
- one-handed operation: close, open and connect to other systainers
- made of stable ABS plastic
- functional handle and T-Loc closure
- this case is part of a multi-component system, stackable (containers can be locked to another and carried)
- protective padding in the upper lid
- inside dimensions: width 383 mm | height 75 mm | depth 273 mm
- splash-proof



Item #
BOXSYS1

System Case | BGS systainer® T-Loc 2

- intelligent transport and storage system
- one-handed operation: close, open and connect to other systainers
- made of stable ABS plastic
- functional handle and T-Loc closure
- this case is part of a multi-component system, stackable (containers can be locked to another and carried)
- protective padding in the upper lid
- inside dimensions: width 383 mm | height 127.5 mm | depth 267 mm
- splash-proof



Item #
BOXSYS2

Socket Set | 6.3 mm (1/4") / 12.5 mm (1/2") | in system case | BGS systainer® | 65 pcs.

- Material: Chrome Vanadium Steel / Chrome Vanadium Steel (S2)

scope of delivery:

- 1 System Case | BGS systainer® T-Loc 1 (BGS BOXSYS1)
- 1 Reversible Ratchet | Fine Tooth | 6.3 mm (1/4"), with quick release function, curved type, 72 teeth (BGS 618)
- 1 Reversible Ratchet | Fine Tooth | 12.5 mm (1/2"), with quick release function, curved type, 72 teeth (BGS 620)
- 1 Spinner Handle | external square 6.3 mm (1/4") | 150 mm (BGS 216)
- 1 Sliding Handle | External Square 6.3 mm (1/4") (BGS 276)
- 1 Extension Bar | 6.3 mm (1/4") | 50 mm (BGS 2336)
- 1 Extension Bar | 6.3 mm (1/4") | 100 mm (BGS 2335)
- 1 Extension Bar | 12.5 mm (1/2") | 125 mm (BGS 3120)
- 1 Extension Bar | 12.5 mm (1/2") | 250 mm (BGS 3121)
- 1 Universal Joint | 6.3 mm (1/4") (BGS 250)
- 1 Universal Joint | 12.5 mm (1/2") (BGS 251)
- 2 Spark Plug Sockets, Hexagon | 12.5 mm (1/2") Drive | 16 and 21 mm (BGS 2472 / 2470)
- 13 Sockets, Hexagon | 6.3 mm (1/4") Drive | 4 - 14 mm (BGS 2474 - 2486)
- 17 Sockets, Hexagon | 12.5 mm (1/2") Drive | 10 - 32 mm (BGS 2910 - 2932)
- 6 Bit Sockets | 6.3 mm (1/4") Drive | T-Star (for Torx) T10 - T40 (BGS 2590 - 2596)
- 4 Bit Sockets | 6.3 mm (1/4") Drive | Slot SL 4 - 7 mm (BGS 2493 - 2496)
- 3 Bit Sockets | 6.3 mm (1/4") Drive | Cross Slot PH1 - PH3 (BGS 2487 - 2489)
- 3 Bit Sockets | 6.3 mm (1/4") Drive | Cross Slot PZ1 - PZ3 (BGS 2490 - 2492)
- 6 Bit Sockets | 6.3 mm (1/4") Drive | Internal Hexagon 3 - 8 mm (BGS 2497 - 2502)



Item #
3354



Foam Tray for BGS BOXSYS1 & 2: Socket Set 6.3 mm (1/4") / 12.5 mm (1/2") | BGS systainer® | 65 pcs.

scope of delivery:

- 1 Reversible Ratchet | Fine Tooth | 6.3 mm (1/4"), with quick release function, curved type, 72 teeth (BGS 618)
- 1 Reversible Ratchet | Fine Tooth | 12.5 mm (1/2"), with quick release function, curved type, 72 teeth (BGS 620)
- 1 Spinner Handle | external square 6.3 mm (1/4") | 150 mm (BGS 216)
- 1 Sliding Handle | External Square 6.3 mm (1/4") (BGS 276)
- 1 Extension Bar | 6.3 mm (1/4") | 50 mm (BGS 2336)
- 1 Extension Bar | 6.3 mm (1/4") | 100 mm (BGS 2335)
- 1 Extension Bar | 12.5 mm (1/2") | 125 mm (BGS 3120)
- 1 Extension Bar | 12.5 mm (1/2") | 250 mm (BGS 3121)
- 1 Universal Joint | 6.3 mm (1/4") (BGS 250)
- 1 Universal Joint | 12.5 mm (1/2") (BGS 251)
- 2 Spark Plug Sockets, Hexagon | 12.5 mm (1/2") Drive | 16 and 21 mm (BGS 2472 / 2470)
- 13 Sockets, Hexagon | 6.3 mm (1/4") Drive | 4 - 14 mm (BGS 2474 - 2486)
- 17 Sockets, Hexagon | 12.5 mm (1/2") Drive | 10 - 32 mm (BGS 2910 - 2932)
- 6 Bit Sockets | 6.3 mm (1/4") Drive | T-Star (for Torx) T10 - T40 (BGS 2590 - 2596)
- 4 Bit Sockets | 6.3 mm (1/4") Drive | Slot SL 4 - 7 mm (BGS 2493 - 2496)
- 3 Bit Sockets | 6.3 mm (1/4") Drive | Cross Slot PH1 - PH3 (BGS 2487 - 2489)
- 3 Bit Sockets | 6.3 mm (1/4") Drive | Cross Slot PZ1 - PZ3 (BGS 2490 - 2492)
- 6 Bit Sockets | 6.3 mm (1/4") Drive | Internal Hexagon 3 - 8 mm (BGS 2497 - 2502)



Item #	Description
3351	Foam Tray for BGS BOXSYS1 & 2: Socket Set 6.3 mm (1/4") / 12.5 mm (1/2") BGS systainer® 65 pcs.
3351-1	Foam Tray for BGS BOXSYS1 & 2 empty for BGS 3351



Foam Tray for BGS BOXSYS1 & 2: Hammer, Pliers, Screwdriver Set | 12 pcs.

scope of delivery:

- 1 Screwdriver | Slot SL 4 mm | Blade Length 80 mm (BGS 4929)
- 1 Screwdriver | Slot SL 5.5 mm | Blade Length 125 mm (BGS 4930)
- 1 Screwdriver | Slot SL 6.5 mm | Blade Length 150 mm (BGS 4931)
- 1 Screwdriver | Cross Slot PH1 | Blade Length 80 mm (BGS 4935)
- 1 Screwdriver | Cross Slot PH2 | Blade Length 100 mm (BGS 4936)
- 1 Voltage tester | 120 - 250 V | 140 mm (BGS 725)
- 1 Combination Pliers | 175 mm (BGS 370)
- 1 Water Pump Pliers | Box-Joint Type | 240 mm (BGS 75111)
- 1 Swedish Diagonal Side Cutter | 165 mm (BGS 393)
- 1 Machinist's Hammer | Hickory Handle | DIN 1041 | 300 g (BGS 52303)
- 1 Measuring Tape | 19 mm x 5 m (BGS 8394)
- 1 COB LED Head Lamp (BGS 85314)

Item #	Description
3353	Foam Tray for BGS BOXSYS1 & 2: Hammer, Pliers, Screwdriver Set 12 pcs.
3353-1	Foam Tray for BGS BOXSYS1 & 2 empty for BGS 3353



System Case Roller Board | for BGS Systainer® | anthracite

- four swivel castors, two lockable
- castor diameter: 100 mm
- large castors and wheelbases for perfect running behavior
- suitable for BGS BOXSYS1 and BOXSYS2
- side handles (recessed) and mounting holes
- max. load bearing capacity: 100 kg
- material: ABS plastic



Item #
6836

Sanitation / Heating Tool Set | 29 pcs.

- works on heating systems, furnaces, switchboards, building service technology etc.
- suitable for sanitation, heating and air-conditioning
- in a BGS system case with 1/3 EPE foam tray for convenient use directly on site
- compact tool design for use in space limited areas
- universal application options due different sockets, bits, adaptors, popular sizes of screwdrivers and ratchet combination wrenches
- work safety in high voltage range with VDE insulated tools (up to 1000 V)

scope of delivery:

- 4 Ratchet Combination Wrenches | reversible | 10 - 13 - 17 - 19 mm (BGS 6610 - 6613 - 6617 - 6619)
- 1 Spinner Handle for bits | internal Hexagon 6.3 mm (1/4") | 200 mm (BGS 217)
- 1 Screwdriver | Slot SL 8 mm | Blade Length 150 mm (BGS 4905)
- 1 VDE Screwdriver | Cross Slot PH1 | Blade Length 80 mm (NGS 4926)
- 1 VDE Screwdriver | Slot SL 3 mm | Blade Length 75 mm (BGS 4925)
- 1 VDE Screwdriver | Slot SL 4 mm | Blade Length 100 mm (BGS 4924)
- 1 Voltage tester | 120 - 250 V | 140 mm (BGS 725)
- 3 Sockets, Hexagon | 6.3 mm (1/4") Drive | 7 10 - 13 mm (BGS 2479 - 2482 - 2485)
- 1 Flexible Ratchet, lockable | external square 6.3 mm (1/4") (BGS 285)
- 1 Extension Bar | 6.3 mm (1/4") | 50 mm (BGS 2336)
- 4 Bits | 6.3 mm (1/4") Drive | internal Hexagon 3 - 4 - 5 - 6 mm (BGS 8176 - 8177 - 8178 - 8179)
- 2 Bits | 6.3 mm (1/4") Drive | Cross Slot PH1 - PH2 (BGS 8185 - 8186)
- 6 Bits | 6.3 mm (1/4") Drive | T-Star (for Torx) T10 (BGS 8190 - 8191 - 8192 - 8193 - 8195 - 8196)
- 1 Bit Adaptor with retaining Ball | 6.3 mm (1/4") Drive | internal Hexagon 6.3 mm (1/4") (BGS 8213)
- 1 Bit Ratchet Adaptor | ext. Hexagon 6.3 mm (1/4") - ext. square 6.3 mm (1/4") | 30 mm (BGS 8202)
- 1 blow mould case with EPE foam tray



Item #
1433



Reversible Ratchets | Fine Tooth

6.3 1/4 10 3/8 12.5 1/2

- curved type
- fine toothed (90 tooth)
- with quick release
- anti-slip ergonomically formed 2-component handle
- BGS 600: 6.3 mm (1/4"), length: 155 mm
- BGS 601: 10 mm (3/8"), length: 205 mm
- BGS 602: 12.5 mm (1/2"), length: 255 mm



Item #	Description
600	Reversible Ratchet finely toothed 6.3 mm (1/4")
601	Reversible Ratchet Fine Tooth 10 mm (3/8")
602	Reversible Ratchet finely toothed 12.5 mm (1/2")



Bit Holder / Socket Adaptor Set | 16 pcs.

6.3 1/4 10 3/8 12.5 1/2 20 3/4

- Material: Chrome Vanadium Steel / Chrome Vanadium Steel (S2)

scope of delivery:

- 1 bit adaptor with retaining ball | 6.3 mm (1/4") Drive | internal Hexagon 6.3 mm (1/4") (BGS 8213)
- 1 bit adaptor with retaining ball | 6.3 mm (1/4") Drive | internal Hexagon 8 mm (5/16") (BGS 8251)
- 1 bit adaptor with retaining ball | 10 mm (3/8") Drive | internal Hexagon 8 mm (5/16") (BGS 292)
- 1 bit adaptor with retaining ball | 10 mm (3/8") Drive | internal Hexagon 10 mm (3/8") (BGS 291)
- 1 bit adaptor with retaining ball | 12.5 mm (1/2") Drive | internal Hexagon 10 mm (3/8") (BGS 290)
- 1 socket adaptor | internal square 6.3 mm (1/4") - external square 10 mm (3/8") (BGS 271)
- 1 socket adaptor | internal square 10 mm (3/8") - external square 6.3 mm (1/4") (BGS 269)
- 1 socket adaptor | internal square 10 mm (3/8") - external square 12.5 mm (1/2") (BGS 280)
- 1 socket adaptor | internal square 12.5 mm (1/2") - external square 10 mm (3/8") (BGS 270)
- 1 socket adaptor | internal square 12.5 mm (1/2") - external square 20 mm (3/4") (BGS 272)
- 1 socket adaptor | internal square 20 mm (3/4") - external square 12.5 mm (1/2") (BGS 274)
- 1 electric drill adaptor | 6.3 mm (1/4") Drive / 6.3 mm (1/4") (BGS 9685-1)
- 1 electric drill adaptor | 6.3 mm (1/4") Drive / 10 mm (3/8") (BGS 9685-2)
- 1 electric drill adaptor | 6.3 mm (1/4") Drive / 12.5 mm (1/2") (BGS 9685-3)
- 1 magnetic bit-holder, extra strong | external hexagon 6.3 mm (1/4") | 60 mm (BGS 1727)
- 1 bit-holder | internal hexagon 6.3 mm (1/4") | 60 mm

Item #	CV	CV-S2
6779		



New Items March (customers only)

Induction Heater | 1.1 kW

principle of operation:

- there is an alternating magnetic field, the metallic object (e.g. nut), in the induction coil, acts on the induced eddy currents as an electrical resistance and thus heats up
- allows heating of screws/nuts without heating surrounding components too much or even destroying them, as it is often the case when heated with a torch
- within the shortest possible time, e.g. rusty nuts are heated and can be loosened
- using on e. g. ball joint pinch bolts and other items on axle and engine
- a formless coil (length: 800 mm) allows using the device also for heating of components (bearings, etc.) e.g. bearings in which the heating facilitates disassembly or assembly
- includes the following induction coils
 - induction coil: 19 mm, length: 220 mm (for Ø 10 - 16 mm)
 - induction coil: 27 mm, length: 220 mm (for Ø 17 - 24 mm)
 - induction coil: 50 mm, length: 235 mm (for heating small surfaces)
 - formless coil, 780 mm, for heating of components
- max. power: 1.1 kW
- max. current: 7.5 A
- length: 200 mm
- width: 140 mm
- height: 75 mm
- power supply: 4.5 kg
- power supply frequency 50 - 60 Hz
- power supply voltage (AC) 230 V
- protection class IP 20



Item #
3390

Cordless Polisher Set | max. 2.800 rpm | 10.8 V | 2.0 Ah

- very small and compact design
- revolver handle, swivable to straight handle for hard to reach areas
- battery operation and many accessories for fast and location-free using
- stepless by adjustable speed from 0 to 2800 rpm
- length: 300 mm (straight handle)
- Li-ion battery with charge level indicator
- pad diameter: 75 mm (3")
- speed: 0 - 2800 rpm
- weight: 760 g
- battery type: 10.8 V Li-ion, 2000 mAh
- charging time: 50 minutes
- charger input: 100 - 240 V AC, 50 - 60Hz, 30 W
- charger output: 12,6 V DC, 1500 A
- sound pressure level: LpA 70 dB (A)
- sound power level: LwA 81 dB (A)
- vibration level: ahd=1.43 m/s² / K=1.5 m/s²

scope of delivery:

- 1 polisher (basic unit) with battery (BGS 9294-1)
- 1 quick charger (BGS 9294-2)
- 1 side handle
- 1 foam cone
- 1 foam disc
- 1 foam disc (waveshape)
- 1 polishing disc (thick)
- 1 polishing disc (thin)
- 1 loop fastener disc
- 3 grinding discs (grit: 240 / 320 / 600)
- 1 storage bag



Item #	Description
9294	Cordless Polisher Set max. 2800 rpm 12 V 1500 mAh
9294-1	Replacement Battery Li-Ion 10.8 V / 2.0 Ah for BGS 9294
9294-2	Quick Charger for Cordless Polisher BGS 9294

Grinding Wheels / Sanding Pad Set | Ø 50 mm | 35 pcs.

- for sanding coatings, welding seams, rust, paint, dirt, etc.
- suitable for all types of surfaces
- quick change discs with unique safety spiral connection for quick replacement of the discs
- max. operating speed: 20000 rpm
- grinding disc diameter: 50 mm (2")

scope of delivery:

- grinding disc mount, 1/4" (6.3 mm) shaft for drills
- 4 grinding discs (black)
 - uniform grinding power
 - for removing coatings, rust and dirt
 - tiny fibers polish scratches and leave a shiny surface
 - cellular structure reduces noises and flying dusts and sparks
- 5 silicon carbide grinding discs (SiC), coarse (yellow)
- 5 silicon carbide grinding discs (SiC), medium (red)
- 5 silicon carbide grinding discs (SiC), fine (blue)
 - superior hardness for a strong, fast grinding
 - irregular breakage of the abrasive structure ensures long and strong grinding power
 - open-mesh 3D structure adapts to different shapes and works well on rough surfaces
- 5 aluminum oxide grinding discs (# 60)
- 5 aluminum oxide grinding discs (# 80)
- 5 aluminum oxide grinding discs (# 100)
 - speeds up grinding, deburring and removing welds, colors, etc.
 - suitable for all types of surfaces



Item #

6649

Electric Eccentric Polisher | max. 6000 rpm | 900W

- especially suitable for fatigue-free polishing of large surfaces
- incl. hook & loop pad, Ø 150 mm and polishing sponge, Ø 150 mm
- voltage: 230-240 V ~50Hz
- power: 900 W
- max. idle speed: 6000 rpm
- max. pad diameter: 150 mm
- sound pressure level LpA: 80.27 dB (A)
- sound power level LwA: 91.27 dB (A)
- vibration level: ahd=6.759 m/s² / K=1.5 m/s²
- protection class: II



Item #	Description
9345	Electric Eccentric Polisher max. 6000 rpm 900 W
9345-2	Hook and Loop Pad for BGS 9345 Ø 150 mm

Air Thread Coupler | 6.3 mm (1/4") internal Thread

- for air hoses
- ball headed joint
- 360° turnable
- country-specific connection standard for adaption on BGS pneumatic tools
- application area: USA, Frankreich

Item #
7065



Air Thread Coupler | 6.3 mm (1/4") external Thread

- for air hoses
- ball headed joint
- 360° turnable
- country-specific connection standard for adaption on BGS pneumatic tools
- application area: USA, Frankreich

Item #
7066



Locking Grip Pliers | "2-IN-1" | 200 mm

- upper jaw is extendable for larger clamping range
- max. clamping range (normal): approx. 30 mm
- max. clamping range (jaw part extended): approx. 100 mm
- jaw material: chrome molydenium steel, forged, nickel plated
- handle material: carbon steel, hardened, black painted
- length: 200 mm

Item #
6803



Nut Riveter & Rivet Nuts Tension Extension | long arm | M3 - M10

- for rivet nuts M3, M4, M5, M6, M8, M10
- suitable for aluminium and steel rivet nuts
- max. stroke: 9 mm
- length: 330 mm

Item #	Description
408-1	Nut Riveter long arm M3 - M10
408-M3	Rivet Nut Tension Extension for BGS 408 M3
408-M4	Rivet Nut Tension Extension for BGS 408 M4
408-M5	Rivet Nut Tension Extension for BGS 408 M5
408-M6	Rivet Nut Tension Extension for BGS 408 M6
408-M8	Rivet Nut Tension Extension for BGS 408 M8
408-M10	Rivet Nut Tension Extension for BGS 408 M10



Special Impact Double-Sided Socket Set / External Hexagon & Screw Extractors 17 - 19 - 21 mm | 12.5 mm (1/2") | 3-tlg. **12.5 1/2**

- specially designed double-sided sockets
- deep execution
- one side with hexagon Pro Torque and on the other side with special twist profile, to loosen defective nuts and screw heads
- the innovative spiral profile digs itself into the head of a damaged screw/ nut and thereby allows to loosen it securely



Item #	Description
7467	Special Impact Double-Sided Socket Set / External Hexagon & Screw Extractors 17 - 19 - 21 mm 12.5 mm (1/2") 3-tlg.
7467-17	Special Impact Double-Sided Socket 17 mm 12.5 mm (1/2")
7467-19	Special Impact Double-Sided Socket 19 mm 12.5 mm (1/2")
7467-21	Special Impact Double-Sided Socket 21 mm 12.5 mm (1/2")



New Items March (customers only)

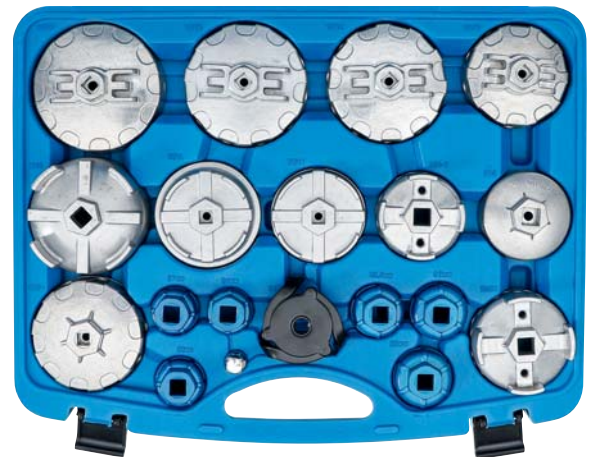
Oil Filter Wrench Set | 19 pcs.

10  3/8

- ideally suitable for installing and removing difficult to access oil filter cover when changing the oil filter insert or oil filter
- for torque-precise tightening according to the manufacturer's instructions
- suitable for left and right hand operation
- for manual operation

scope of delivery:

- oil filter wrench 100.5 mm x 15-pt, for Mazda, Mitsubishi
- oil filter wrench 94.5 mm x 15-pt, for Nissan, Toyota
- oil filter wrench 92 mm x 15-pt, for Nissan, Subaru
- oil filter wrench 79 mm x 15-pt, for Toyota, Honda, Mitsubishi, Subaru, Mazda, Isuzu
- oil filter wrench 87 mm x 16-pt, for Volvo
- oil filter wrench 79.5 mm x 14-pt, for Lexus
- oil filter wrench 70 mm x 14-pt, for Toyota
- oil filter wrench 63 - 64 mm x 14-pt, for Toyota
- oil filter wrench 66.5 mm x 14-pt, for Ford, Mazda
- oil filter wrench 84 mm x 14-pt, for Dodge Sprinter (2007-), Mercedes-Benz E320 (2007-), Jeep Cherokee 3.0L V6 Common Rail (2007-)
- oil filter wrench 74 mm x 14-pt, for Mercedes-Benz
- oil filter wrench 24 mm x 6-pt, for BMW 5, BMW 7, BMW X5 V8 (N62) (2004-), Saturn (2008), Astra 1.8L EcoTec, Chrysler 3.6L V6 (2011-), 200, 300, T/C Dodge Jeep
- oil filter wrench 27 mm x 6-pt, for Mercedes-Benz A Class
- oil filter wrench 30 mm x 6-pt, for Audi A2, VW Polo, Lupo 1.4L / 1.6L
- oil filter wrench 32.5 mm x 6-pt, for Opel Astra G, Corsa B, Zafira, Audi, VW 1-36 mm, Opel Omega, Vectra B, Zafira (98-), BMW M43/60
- oil filter wrench 36 mm x 6-pt, for Opel Omega, Vectra B, Zafira (98-), BMW M43/60, Mercedes-Benz Vito CDI, C, E, VW Lupo 1.2 TDI, MAN
- oil filter wrench 38 mm x 6-pt, for Opel Vectra 2.0D
- oil filter wrench, adjustable, 55 - 90 mm, universal
- adaptor 12.5 (1/2") inner square to 10 (3/8") outer square



New Items March (customers only)

Item #
6786

Turbocharger System Pressure Tester Set | 13 pcs.

- for pressurizing turbocharger systems with Henn clamps - bayonet lock Ø 31.0 - 61.0 mm
- suitable for turbo systems with inserted and with steel ring secured pressure hoses
- allows professional and economical diagnosis

scope of delivery:

- test adaptor Ø 31.0 x 41.1 mm
- test adaptor Ø 38.0 x 48.1 mm
- test adaptor Ø 46.0 x 56.1 mm
- test adaptor Ø 51.1 x 61.1 mm
- test adaptor Ø 56.0 x 66.1 mm
- test adaptor Ø 61.0 x 71.1 mm
- sealing cap Ø 31.0 x 41.1 mm
- sealing cap Ø 38.0 x 48.1 mm
- sealing cap Ø 46.0 x 56.1 mm
- sealing cap Ø 51.1 x 61.1 mm
- sealing cap Ø 56.0 x 66.1 mm
- sealing cap Ø 61.0 x 71.1 mm
- pressure regulator with shut-off valve, pressure gauge and test hose with quick coupler



Item #

6933

Injector Gasket Puller | 370 mm | Heavy Duty

- suitable for extracting burnt in copper sealing washers from the injector shaft
- universal usage for BMW, Mercedes-Benz, PSA models
- helps to avoid damages to the cylinder heads
- with 85 mm long conical tip, exchangeable and 840 g sliding weight
- to remove injector sealing rings with internal diameter from 4 - 16 mm
- with ergonomic handle

Item #

6959



Timing Chain Tensioning Lever | for VAG 1.8L / 2.0L TFSI / TSI

- for pretensioning the timing chain and unlocking the chain tensioner
- to be attached on the cylinder head, for pushing back the chain tensioning rail

suitable for almost all 1.8L and 2.0L TFSI / TSI engines with e.g. following engine codes:

- 1.8L: CDAA, CDHA, CDHB, CJEB, CDAB, CGYA
- 2.0L: CCZA, CDNB, CDNC, CFKA, CCZC, CPSA, CESA, CETA, CCZB, CDND, CCZD

built in the following VAG models:

- Audi A3, A4, A5, A6, Q3, Q5, TT
- Seat Alhambra, Altea, Exeo, Leon, Toledo
- Skoda Octavia II, Superb II, Yeti
- Volkswagen Eos, GolfVI, Passat CC, Sharan, Beetle, Scirocco, Tiguan

- to be used as OEM T40243



Item #
6902

Oil Filter Wrench | for VW Crafter & Volvo 2.0 / 2.5L Diesel

- for disassembly and assembly of plastic housing when replacing the oil filter insert
- to be used as VAG OEM T50011 and Volvo OEM 9997084, oil filter OE 2E0127159
- 12.5 mm (1/2") drive double inner square

suitable for following vehicles:

- VW Crafter 2.5 TDi (2006-2013)
- Volvo 4 / 5 cylinder 2.0L / 2.4L diesel, built in models V70, XC70, S40, S60, S80, XC90, V50

engine codes:

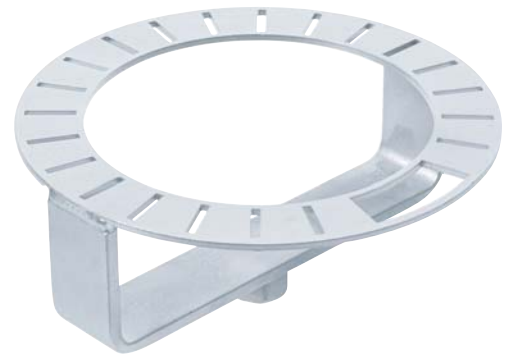
- AUH, BCQ, BJJ, BJK,BJL, BJM, CEBA, CEBB, CECA, CECB



Item #
1241

Fuel Tank Sensor Wrench | for Audi

- designed to remove and install the fuel tank sensor locking ring
- suitable for e. g. Audi A4 (2008-2016), A6 (2008-2016), A6 (2005-2011), A8 (1994-)
- drive profile 1: outer hexagon
- drive profile size 1: 21 mm
- drive profile 2: inner square
- drive profile size 2: 12.5 mm (1/2")
- to be used as OEM T40068A, 3342



Item #
6767

Injector Tube Seal Ring Installation Tool | for PSA 1.6 Diesel

- for quick, easy and damage free mounting of the sealing ring on the injector tube
- suitable for 1.6L 16V PSA Diesel engines

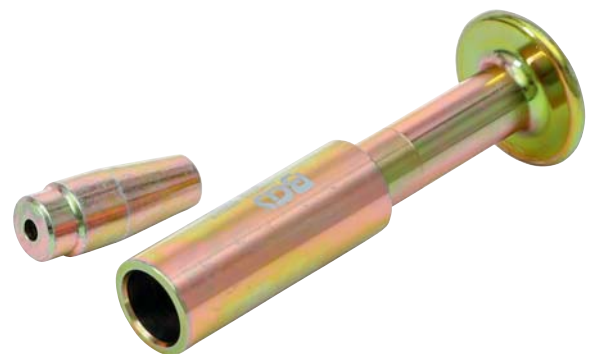
engine codes:

- PSA DV6, Ford G8DX, HHDX, HHJX, Mazda Y6, Suzuki 9HX, Volvo D4164T

built in e.g. following vehicles:

- Peugeot: 1007, 2008, 206, 207, 208, 3008, 301, 307, 308, 4008, 407, 5008, 508, Expert III, Partner I, Partner II, Partner III
- Citroën Berlingo I / II / III, C2, C3 I / II, C4 I / II, C5 II / III, C-Elysee, Dispatch, Jumpy III, DS3, DS4, DS5, Xsara Picasso
- Fiat Scudo
- Volvo C30, S40, S80, V50, V70
- Ford C-Max, Fiesta, Focus, Focus C-Max, Fusion
- Mazda 2, 3, 5
- Suzuki SX4, SX4 Classic

Item #
6906



Crankshaft Seal Ring Mounting Tool | for VAG

- for assembling the flywheel-side radial seal ring carrier (crankshaft radial seal ring), to be used as OEM T50010
- flywheel-side radial seal carrier together with radial seal ring and the speed sensor is one unit
- if the radial seal ring is defective, the entire unit must be renewed

suitable for VW Crafter (2006-2013) with following engines:

- 2.5L TDI, engine codes: BJJ, BJK, BJL, BJM
- 2.5L Blue TDI, engine codes: CEBA, CEBB, CECA, CECB

Item #
1246



Wheel Chock | 250 x 160 x 185 mm | for Cars / Trucks

- for securing cars, trucks, caravans, trailers
- serves to prevent unintentional rolling away
- with handle
- ShA 85° +/- 5
- length: 250 mm
- width: 160 mm
- height: 185 mm
- material: rubber

Item #
7015



Rubber Pad | for Auto Lifts | Ø 120 mm

- inner diameter: 113 mm
- outer diameter: 120 mm
- height: 22 mm
- ShA 85° +/- 5
- material: rubber
- suitable for MAHA

Item #
7053



Rubber Pad | for Auto Lifts | Ø 120 mm

- inner diameter: 113 mm
- outer diameter: 120 mm
- height: 23 mm
- ShA 85° +/- 5
- material: rubber + steel plate
- suitable for MAHA

Item #
7052



Rubber Pad | for Auto Lifts | Ø 123 mm

- inner diameter: 108 mm
- outer diameter: 123 mm
- height: 25 mm
- ShA 85° +/- 5
- material: rubber + steel plate
- suitable for Ravaglioli / Werther

Item #
7043



Rubber Pad | for Auto Lifts | Ø 125 mm

- inner diameter: 120 mm
- outer diameter: 125 mm
- height: 24 mm
- ShA 85° +/- 5
- material: rubber + steel plate
- suitable for Nussbaum / AMI

Item #
7054



Rubber Pad | for Auto Lifts | Ø 140 mm

- inner diameter: 130 mm
- outer diameter: 140 mm
- height: 25 mm
- ShA 85° +/- 5
- material: rubber
- suitable for Twin Busch

Item #
7047



Rubber Pad | for Auto Lifts | Ø 100 mm

- inner diameter: 85 mm
- outer diameter: 100 mm
- height: 14 mm
- ShA 85° +/- 5
- material: rubber
- suitable for Ravaglioli / Sirio / Space

Item #
7042



Rubber Pad | for Auto Lifts | Ø 120 mm

- inner diameter: 108 mm
- outer diameter: 120 mm
- height: 32 mm
- ShA 85° +/- 5
- material: rubber
- suitable for Launch / Twin Busch / RP Tools

Item #
7049



Rubber Pad | for Auto Lifts | Ø 130 mm

- inner diameter: 125 mm
- outer diameter: 130 mm
- height: 14 mm
- ShA 85° +/- 5
- material: rubber
- suitable for Ravaglioli / Sirio / Space

Item #
7044



Rubber Pad | for Auto Lifts | Ø 140 mm

- inner diameter: 125 mm
- outer diameter: 140 mm
- height: 30 mm
- ShA 85° +/- 5
- material: rubber
- suitable for Twin Busch

Item #
7048



Rubber Pad | for Auto Lifts | Ø 150 mm

- inner diameter: 130 mm
- outer diameter: 150 mm
- height: 23 mm
- ShA 85° +/- 5
- material: rubber
- suitable for Rivaglioli

Item #
7045



New Items March (customers only)

Rubber Pad | for Auto Lifts | Ø 120 mm

- inner diameter: 105 mm
- outer diameter: 120 mm
- height: 30 mm
- ShA 85° +/- 5
- material: rubber
- suitable for Twin Busch

Item #
7046



Rubber Pad | for Auto Lifts | Ø 120 mm

- inner diameter: 110 mm
- outer diameter: 120 mm
- height: 19 mm
- ShA 85° +/- 5
- material: rubber
- suitable for J.A.B. BECKER / ATH / HOFMANN / HERMANN

Item #
7050



Rubber Pad | for Auto Lifts | Ø 120 mm

- inner diameter: 110 mm
- outer diameter: 120 mm
- height: 19 mm
- ShA 85° +/- 5
- material: rubber + steel plate
- suitable for J.A.B. BECKER / ATH / HOFMANN / HERMANN

Item #
7051



Rubber Pad | for Auto Lifts

- ShA 85° +/-5
 - material: rubber
 - universally suitable
 - suitable for auto lifts
-
- length: 160 mm
 - width: 120 mm
 - BGS 7036: height: 20 mm
 - BGS 7006: height: 30 mm
 - BGS 7007: height: 40 mm
 - BGS 7038: height: 60 mm
 - BGS 7040: height: 80 mm
 - BGS 7008: height: 100 mm
 - BGS 7039: height: 115 mm

Item #	Description
7036	Rubber Pad for Auto Lifts 160 x 120 x 20 mm
7006	Rubber Pad for Auto Lifts 160 x 120 x 30 mm
7007	Rubber Pad for Auto Lifts 160 x 120 x 40 mm
7038	Rubber Pad for Auto Lifts 160 x 120 x 60 mm
7040	Rubber Pad for Auto Lifts 160 x 120 x 80 mm
7008	Rubber Pad for Auto Lifts 160 x 120 x 100 mm
7039	Rubber Pad for Auto Lifts 160 x 120 x 115 mm



New Items March (customers only)

Rubber Pad | for Auto Lifts | 116.5 x 116.5 x 36.5 mm

- length: 116.5 mm
- width: 116.5 mm
- height: 36.5 mm
- ShA 85° +/- 5
- material: rubber
- universally suitable
- suitable for auto lifts

Item #
7037



Rubber Pad | with Groove | for Auto Lifts | 373 x 100 x 35 mm

- length: 373 mm
- width: 100 mm
- height: 35 mm
- ShA 85° +/- 5
- material: rubber
- universally suitable
- suitable for auto lifts

Item #
7012



Rubber Pad | for Auto Lifts | Ø 105 mm

- diameter: 105 mm
- height: 60 mm
- ShA 85° +/- 5
- material: rubber
- universally suitable
- suitable for auto lifts



Item #
7009

Protection Block | for Auto Lifts

- material: polyethylene
- universally suitable
- suitable for auto lifts
- length: 340 mm
- BGS 7010: width: 150 mm / height: 55 mm
- BGS 7011: width: 130 mm / height: 100 mm



Item #	Description
7010	Protection Block for Auto Lifts 340 x 150 x 55 mm
7011	Protection Block for Auto Lifts 340 x 130 x 100 mm



Tire Change Service Set | 5 pcs.

12.5  1/2

- can be used for wheel changing on most cars
- practical set for changing tires and storing tools, incl. kneeboard
- fits in the storage space for the spare wheel in the trunk on many cars

scope of delivery:

- Torque Wrench | 12.5 mm (1/2") | 28 - 210 Nm (BGS 963)
 - reversible ratchet
 - the set is locked torque with locking screw
 - for setting the torque on screw connections with right-hand thread
 - click signal when torque is reached
 - profile: external square
 - profile size, metric: 12.5 mm
 - min. torque: 28 Nm
 - max. torque: 210 Nm
 - profile size, inch: 1/2"
- Wheel Nut Wrench | 12.5 mm (1/2") Drive | 17 x 19 mm (BGS 1510)
 - incl. exchangeable socket 17 x 19 mm
 - rubber coated handle
 - length: 330 - 500 mm
- Protective Impact Socket Set | 12.5 mm (1/2") Drive | 17 - 19 - 21 mm | 3 pcs. (BGS 7310)
 - suitable for both manual and impact wrenches
 - with plastic cover and plastic insert to protect the aluminium rims
 - with ball hole and groove
 - with colour coding for quick identification
 - profile: hexagon
 - length: 85 mm
- Foam Tray (BGS 57310-1)
 - width: 590 mm
 - height: 45 mm
 - depth: 445 mm



New Items March (customers only)



Item #	Description
57310	Tire Change Service Set 5 pcs.
57310-1	Foam Tray empty for BGS 57310



Socket Set | 6.3 mm (1/4") / 10 mm (3/8") / 12.5 mm (1/2") Drive | 172 pcs.

- 7 L-type wrenches, internal hexagon 1.2 - 5 mm

12.5 mm (1/2") drive

- reversible ratchet
- extension bar external/internal square 12.5 mm (1/2"), length 125 mm
- extension bar external/internal square 12.5 mm (1/2"), length 250 mm
- sliding handle adaptor
- universal joints external/internal square 12.5 mm (1/2")
- spark plug socket, 16 - 21 mm
- adaptor 12.5 mm (1/2") - 8 mm (5/16")
- 17 sockets, 10 - 32 mm
- 5 deep sockets, 16 - 17 - 18 - 19 - 22 mm
- 2 sockets, E-type E20 - E24

10 mm (3/8") drive

- reversible ratchet
- extension bar, external/internal square 10 mm (3/8"), length 125 mm
- universal joints, external/internal square 10 mm (3/8")
- spark plug socket 18 mm
- adaptor 10 mm (3/8") - 8 mm (5/16")
- 10 sockets, 10 - 11 - 12 - 13 - 14 - 15 - 16 - 17 - 18 - 19 mm
- 6 deep sockets, 10 - 11 - 12 - 13 - 14 - 15 mm
- 6 sockets, E-type E10 - E11 - E12 - E14 - E16 - E18

6.3 mm (1/4") drive

- reversible ratchet
- sliding handle
- universal joints, external/internal square 6.3 mm (1/4")
- extension bar, external/internal square 6.3 mm (1/4"), length 50 mm
- extension bar, external/internal square 6.3 mm (1/4"), length 100 mm
- spinner handle
- 13 sockets, 4 - 4.5 - 5 - 5.5 - 6 - 7 - 8 - 9 - 10 - 11 - 12 - 13 - 14 mm
- 7 deep sockets, 4 - 5 - 6 - 7 - 8 - 9 - 10 mm
- 5 sockets, E-type E4 - E5 - E6 - E7 - E8
- 30 bit sockets
- 1 bit adaptor
- 20 bits

8 mm (5/16") drive

- 24 bits
- profile: Hexagon
- surface finish: satin chrome plated



Item #
15219



Combined Bit Set | 54 pcs.

- in metal case
- 7 bits, length: 30 mm, internal hexagon 4 - 5 - 6 - 7 - 8 - 10 - 12 mm
- 7 bits, length: 75 mm, internal hexagon 4 - 5 - 6 - 7 - 8 - 10 - 12 mm
- 5 bits, length: 30 mm, spline (for XZN) M5 - M6 - M8 - M10 - M12
- 5 bits, length: 70 mm, spline (for XZN) M5 - M6 - M8 - M10 - M12
- 7 bits, length: 30 mm, T-Star (for Torx) T20 - T25 - T30 - T40 - T45 - T50 - T55
- 7 bits, length: 70 mm, T-Star (for Torx) T20 - T25 - T30 - T40 - T45 - T50 - T55
- 7 bits, length: 30 mm, T-Star tamperproof (for Torx) T20 - T25 - T30 - T40 - T45 - T50 - T55
- 7 bits, length: 70 mm, T-Star tamperproof (for Torx) T20 - T25 - T30 - T40 - T45 - T50 - T55
- 1 bit adapter with retaining ball | 10 mm (3/8") drive | internal hexagon 10 mm (3/8")
- 1 bit adapter with retaining ball | 12.5 mm (1/2") drive | internal hexagon 10 mm (3/8")



Item #
6868



Pin Drill Set | 6 - 10 - 13 - 16 mm | 4 pcs.

- for making wooden pins /plugs
- includes four pin drills with the following dimensions:
 - outer diameter x inner diameter x inner depth
 - 13 x 6 x 20 mm
 - 13 x 8 x 20 mm
 - 16 x 10 x 20 mm
 - 19 x 13 x 20 mm

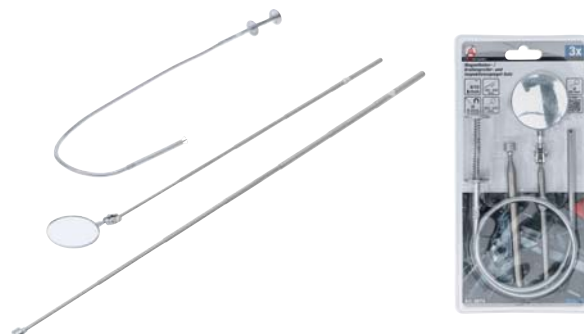


Item #
6838



Magnetic Lifter / Claw and Inspection Mirror Set | 3-pcs.

- flexible gripping tool, length: 610 mm, for gripping nuts, screws and other components with a diameter of up to 35 mm
- telescopic magnetic pick-up tool, length: 128 - 635 mm, strong neodymium magnet Ø 9 mm, for lifting metallic objects
- telescopic inspection mirror, length: 200 - 542 mm, mirror diameter: 60 mm, for the inspection of hard to reach areas



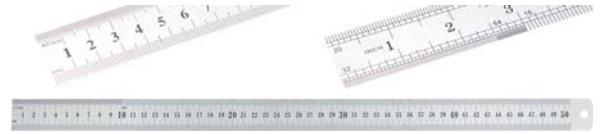
Item #
6874





Steel Scale | flexible | Stainless Steel | 0.5 m

- length: 0.5 m
- material: stainless steel
- front side with metric scale, back side with inch scale



Item #
50889



Reducing Ring Set | 4 pcs.

- for the adaptation of circular saw blades

scope of delivery:

- 1 reducing ring 20 to 16 mm
- 1 reducing ring 30 to 20 mm
- 1 reducing ring 30 to 22 mm
- 1 reducing ring 30 to 25.4 mm

Item #
3962



Decoration Clip Assortment | transparent | 20 pcs.

- suitable for fairy lights, decoration material, etc.
- self-adhesive
- damage-free hanging without drilling
- removable without residue
- max. load bearing capacity: 200 g (per clip)
- width: 13 mm
- height: 18 mm
- color: transparent

Item #
80899

