

## COB-LED Work Lamp | 30 W

- provides two different color temperatures, warm light for bright and cold light for dark surfaces
- color temperature continuously adjustable between warm and cold light
- durable aluminium housing with rubber coating, supplies a good grip
- 180 degrees rotatable swivel stand base
- battery can also charge a mobile phone
- intelligent power display detects the charging status and the remaining power
- charger included in delivery
- LED-Type: 30 W COB-LED
- LED brightness: 1400 lm / 2200 lm
- LED mode: warm light cold light
- LED color temperature: 3000 - 3500 K (warm light)
- LED color temperature: 7500 - 8000 K (cold light)
- working time: 2.5 hours
- charging time: 4.5 hours
- status display: 4 green LEDs
- charging socket (input): for charger
- sharging socket (output): USB A for e. g. mobile phones
- swivel angle (stand base): 180°
- protection class: IP54
- battery type: Lithium-Ionen (4x)
- battery voltage: 3.7 V
- battery capacity: 5200 mAh
- charger: Input 100 - 240 V | 50/60 Hz | Output 12 V 1.5 A
- charging temperature: -5 °C to +45 °C
- working temperature: -20 °C to +60 °C
- storage temperature: -20 °C to +60 °C
- dimensions: 225 x 211 x 53 mm
- weight: 1046 g



Item #
85329

New Items April (customers only)

## COB-LED Work Lamp | 10 W

- provides two different color temperatures, warm light for bright and cold light for dark surfaces
- color temperature continuously adjustable between warm and cold light
- durable aluminium housing with rubber coating, supplies a good grip
- 180 degrees rotatable swivel stand base
- battery can also charge a mobile phone
- intelligent power display detects the charging status and the remaining power
- charger included
- LED-Type: 10 W COB-LED
- LED brightness: 600 lm / 1000 lm
- LED mode: warm light cold light
- LED color temperature: 2500 - 3000 K (warm light)
- LED color temperature: 6000 - 6500 K (cold light)
- working time: 3 hours
- charging time: 6 hours
- status display: 4 green LEDs
- charging socket (input): for charger
- charging socket (output): USB A for e. g. mobile phones
- swivel angle (stand base): 180°
- protection class: IP54
- battery type: 18650 Lithium-Ionen (2x)
- battery voltage: 3.7 V
- battery capacity: 4400 mAh
- charger: Input 100 - 240 V | 50/60 Hz | output 5 V 1 A
- charging temperature: -5 °C to +45 °C
- working temperature: -20 °C to +60 °C
- storage temperature: -20 °C to +60 °C
- dimensions: 189.5 x 164.5 x 45.5 mm
- weight: 720 g



New Items April (customers only)

Item #
85328

## Cordless Bendy Lamp | COB-LED | 5 W

- COB LED technology
- additional SMD LED light in the lamp head
- lamp head 270° rotatable
- with magnet in bottom of the lamp
- swivel hanging hook
- can also be used while charging
- small and handy lamp with very good brightness, especially suitable for hard to reach places
- power source: rechargeable battery
- battery type: Li-ionen
- battery voltage: 3.7 V Li-ion
- battery capacity: 2000 mAh
- head light: 3 W LED, 150 Lm
- side light: 5 W COB LED, 360 Lm
- working time (head light): 4.5 hours
- working time (side light): 3 hours
- charging time: approx. 4 hours
- charging connector: Micro USB
- product size (folded): 150 x 48 x 39 mm
- product size (expanded): 270 x 48 x 39 mm
- charging temperature: -5 °C to +45 °C
- working temperature: -20 °C to +60 °C
- storing temperature: -20 °C to +60 °C
- material: polycarbonate / thermoplastic rubber / aluminum
- product weight: 157 g

### scope of delivery:

- 1 cordless bendy lamp
- 1 USB charging cable

Item #
85334



## COB-LED Work Lamp | foldable

- small, handy and very bright lamp with head and main light
- 180° swiveling foot for adjusting the standing angle
- foot with magnet for attaching to metallic surfaces
- 360° hook rotating hanging
- use output for e. g. charging a mobile phone
- battery type: Li-ion
- battery voltage: 3.7 V
- battery capacity: 2000 mAh
- head light: 3 W LED, 150 Lm
- side light: 5 W COB LED, 360 Lm
- working time (head light): 3 to 5 hours
- working time (side light): 2 to 2.5 hours
- charging time: approx. 3 hours
- charging socket (input): Micro USB
- charging socket (output): USB A
- product size: 185 x 60 x 32 mm
- charging temperature: -5 °C to +45 °C
- working temperature: -20 °C to +60 °C
- storing temperature: -20 °C to +60 °C
- material: polycarbonate (PC) / ABS Plastic / thermoplastic rubber (TPR) / aluminum
- weight: 215 g



Item #
85335

## LED Head Lamp with Focus | 3 W

- ideal for work where both hands are needed
- adjustable light cone (focus), from spot to floodlight
- multifunction key for operating mode; 1 W / 3 W / red and white LED flashes / off
- adjustable, elastic headband for a secure fit
- adjustable lamp head inclination
- splashproof according to IPX3
- power source: 1.5 V AAA batteries, 3 pieces (included)
- light source: 3 Watt CREE Chip Power LED
- 150 lumens
- lighting range: up to 100 m
- working time: approx. 3 hours
- material: ABS + aluminum
- weight: 83 g



Item #  
85327



## Socket, 12-Point | 12.5 mm (1/2") Drive | 41 mm

12.5 1/2

- knurled
- wrench size: 41 mm
- profile: 12-point
- surface finish: satin chrome plated

Item #  
10650-1

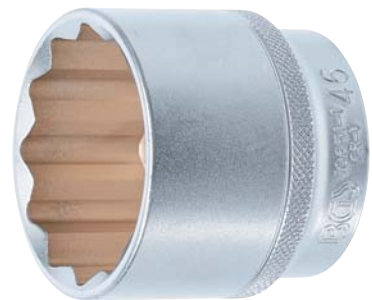


## Socket, 12-Point | 12.5 mm (1/2") Drive | 46 mm

12.5 1/2

- knurled
- wrench size: 46 mm
- profile: 12-point
- surface finish: satin chrome plated

Item #  
10651-1



## Socket, Hexagon | 12.5 mm (1/2") Drive | 46 mm

12.5 1/2

- knurled
- wrench size: 46 mm
- profile: hexagon
- surface finish: satin chrome plated

Item #  
2946-1



## Impact Socket, Hexagon | 12.5 mm (1/2") Drive | 52 mm

- for both manual and impact wrenches
- can be fixed on impact wrench by pin and O-ring
- wrench size: 52 mm
- profile: chrome plated

Item #
70012



## O-Ring & Locking Pin Set | 12.5 mm (1/2") | 8 - 14 mm | 5/16" - 5/8"

12.5  1/2

- for impact sockets with 12.5 mm (1/2") drive
- suitable for impact sockets with the width across flats 8 - 14 mm

Item #
6860



## O-Ring & Locking Pin Set | 12.5 mm (1/2") | 15 - 38 mm | 11/16" - 1-1/2"

12.5  1/2

- for impact sockets with 12.5 mm (1/2") drive
- suitable for impact sockets with the width across flats 15 - 38 mm

Item #
6861



## O-Ring & Locking Pin Set | 20 mm (3/4") | 17 - 48 mm | 11/16" - 1-15/16"

12.5  1/2

- for impact sockets with 20 mm (3/4 ") drive
- suitable for impact sockets with the width across flats 17 - 48 mm

Item #
6862



New Items April (customers only)

## O-Ring & Locking Pin Set | 20 mm (3/4") | 50 - 70 mm | 2" - 2-3/4"

20  3/4

- for impact sockets with 20 mm (3/4") drive
- suitable for impact sockets with the width across flats 50 - 70 mm



Item #

6863

## O-Ring & Locking Pin Set | 25 mm (1") | 17 - 70 mm | 11/16" - 2-3/4"

25  1

- for impact sockets with 25 mm (1") drive
- suitable for impact sockets with the width across flats 17 - 70 mm



Item #

6864

## O-Ring & Locking Pin Set | 25 mm (1") | 71 - 95 mm | 2-13/16" - 4"

25  1

- for impact sockets with 25 mm (1") drive
- suitable for impact sockets with the width across flats 71 - 95 mm



Item #

6865

New Items April (customers only)



## Double Swivel Head Ratchet Wrenches

- extra long
- cold forged
- with continuously moveable head
- profile: 12-point
- surface finish: satin chrome plated

- BGS 1541-10X11: 10 x 11, length: 294 mm
- BGS 1541-12X13: 12 x 13, length: 327 mm
- BGS 1541-14X15: 14 x 15, length: 370 mm
- BGS 1541-16X18: 16 x 18, length: 409 mm
- BGS 1541-17X19: 17 x 19, length: 412 mm



Item #	Description
1541-10X11	Double Swivel Head Ratchet Wrench   10 x 11 mm
1541-12X13	Double Swivel Head Ratchet Wrench   12 x 13 mm
1541-14X15	Double Swivel Head Ratchet Wrench   14 x 15 mm
1541-16X18	Double Swivel Head Ratchet Wrench   16 x 18 mm
1541-17X19	Double Swivel Head Ratchet Wrench   17 x 19 mm

## Screw Extractor & Left Cutting Drill Set | HSS | titanium nitrated | 2 - 7.5 mm | 10 pcs.

- for removing broken studs and screws with right-hand thread
- contains titanium coated left-hand drills, it is possible to turn out the broken bolt when drilling
- screw extractors have a spiral groove with left twist, they automatically dig deeper into the broken threaded bolt when turning

### scope of delivery

- 5 spiral extractors
- 5 HSS left cutting drills
- sizes: 2 mm (5/64") - 2.8 mm (7/64") - 4 mm (5/32") - 6.4 mm (1/4") - 7.5 mm (19/64")



Item #
6780



## Air Nipple | 10 mm (3/8") external Thread | USA / France Standard

- country-specific connection standard for use with BGS pneumatic tools
- application area: USA, France



Item #
7064

### Air Nipple with 10 mm Hose Connection | USA / France Standard

- country-specific connection standard for use with BGS pneumatic tools
- application area: USA, France

Item #
7062



### Air Nipple with 8 mm (5/16") Hose Connection | USA / France Standard

- country-specific connection standard for use with BGS pneumatic tools
- application area: USA, France

Item #
7061



### Air Nipple with 6 mm Hose Connection | for USA / France Standard

- country-specific connection standard for use with BGS pneumatic tools
- application area: USA, France

Item #
7060



### Air Quick Coupler with 8 mm (5/16") Hose Connection | USA / France Standard

- country-specific connection standard for adaption on BGS pneumatic tools
- application area: USA, France

Item #
7059



### Air Quick Coupler with 6 mm Hose Connection | USA / France Standard

- country-specific connection standard for adaption on BGS pneumatic tools
- application area: USA, France

Item #
7058



### Air Nipple | 6.3 mm (1/4") external Thread | USA / France Standard

- country-specific connection standard for use with BGS pneumatic tools
- application area: USA, France

Item #
7057





## Powerful Double Magnetic Holder | adjustable Angle | 22.7 kg

- practical helper for welding work
- for positioning and holding steel objects at almost every angle
- swivel arms hold two 360° swiveling ceramic magnets
- variable angle adjustment
- capacity: each magnet up to 22.7 kg
- magnet size: 85.7 x 63.5 mm (3-3 / 8 x 2-1 / 2)



Item #
6784

## Oil Filter Pliers | self-adjusting | Ø 60 - 120 mm | 30° offset jaws

- adapts automatically to the oil filter
- suitable for oil filter diameters from 60 to 120 mm
- PVC dipped handles
- length: 300 mm
- 30° offset jaws for hard-to-reach oil filter

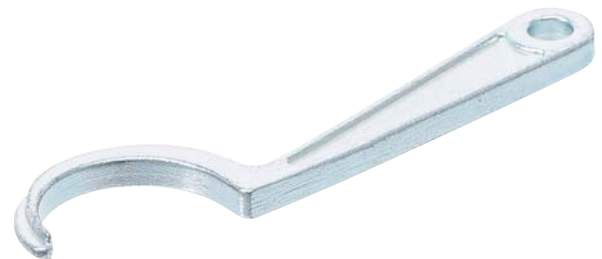


Item #
70011



## Valve Shim Tool | for Honda

- designed to adjust valve clearance on Honda twin cam models
- to fix and hold the valve spring down while removing the adjusting shims
- suitable for 4 cylinder twin cam models:
  - CBX1000 (late 1970ies to 1980ies)
  - CB750 (1979 - 1982), CB750SC (1983), CB900C/F (1980 - 1982), CB 1000C (1983), CB1100F (1983), CBX (1979 - 1982)
- to be used as OEM 07964422000



Item #
6722



## Rocker Arm Pin Extractor Set | for Ducati

- to be used for extracting the valve rocker pins
- with sliding hammer
- incl. 3 adaptors M5, M6 and M7
- suitable for the following Ducati models:
  - MH900e, Diavel, Hypermotard, Monster, Multistrada, Sport Classic, Sport Touring, Street Fighter, Superbike and Super Sport Models
- to be used as OEM: 88713.3760, 88713.3943, 88713.1994



Item #
6723

New Items April (customers only)

## Camshaft Locking Pin Set | for Ducati

- for locking camshafts in their timed position when replacing the cam belts and cam drive pulleys
- suitable for Ducati models > 2005 with 3 valve engines
- thread size: M6 x 1.0 mm
- to be used as OEM 887132257



Item #

6721

## Camshaft Locking Pin Set | for Ducati

- required when replacing timing belts or performing any cylinder head repair or maintenance work
- suitable for:
  - Ducati models with 2 valve engines
  - V-twin engines equipped with split cam pulleys
  - Monster 695 2007 - 2008, Monster 750IE 2002, Monster 800, 800S 2003 - 2004, Monster 900IE 2002, Monster S2R 800, S2R Dark 2005 - 2007, Super Sport 620S, 750 Sport, 800, 800S, 800SS, 900 Sport 2002 - 2004
- thread size: M5 x 0,8 mm
- to be used as OEM 887132009



Item #

6720

## Fuel Line Disconnect Set

- for disconnecting quick connect couplings on fuel lines
- robust and time-saving operation when replacing fuel filters
- allows use in areas of difficult access or on connectors that are close to sharp bends (i.e. fuel filter top pipes)
- suitable for application on vehicles from following manufacturers: VAG, Fiat, Jeep, Opel, Vauxhall, Ford, Chrysler and Volvo
- to be used as Opel OEM J-41769 CH-41769



Item #

7024

## Fuel Tank Locking Ring Tool | for Fiat / Jeep

- suitable for releasing and tightening the fuel filter locking ring from the tank sender to the fuel tank
- avoids damages to the ring by the tool
- makes work in tight gaps and small areas possible
- drive profile size, inch: 1/2"
- drive profile size, metric: 12.5 mm
- external hexagon: 21 mm



Item #

7026

## Valve Spring Compressor | for BMW, MINI, Citroën, Peugeot

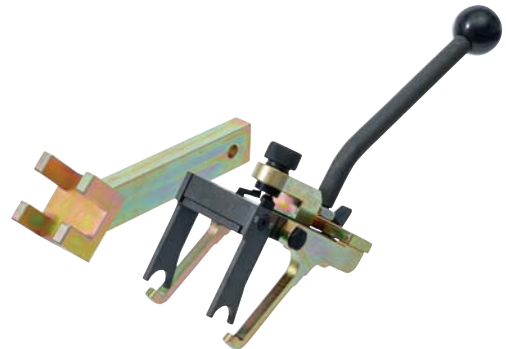
- for removing and installing the pressure spring on the intermediate lever

suitable for the following models:

- Citroën: Berlingo, C3 II, C3 Picasso, C4 I, C4 II, C4 Picasso, C5 III, DS3, DS4, DS5
- MINI: Clubman (R55), Countryman (R60), MINI (R56/R57/R58/R59), Paceman (R61)
- Peugeot: 207, 208, 2008, 308, 3008, 408, 508, 5008, RCZ, Partner, Tepee

suitable for vehicles with engine codes:

- N12, N16, N18, 5FE, 5FN, 5FP, 5FV, 5FW, EP6
- to be used as OEM: 119571 - 119572 - 119570 - 0197-3B1 / 0197-3B2



Item #
70037

## Sliding Block Fixing Tool | for BMW, MINI, Citroën, Peugeot

- for fixing and aligning the sliding blocks on the eccentric shaft
- for models with variable valve timing

suitable for the following models:

- BMW: 1 (F20/F21), 3 (F30/F31/F35/F80)
- Citroën: Berlingo, C3 II, C3 Picasso, C4 I, C4 II, C4 Picasso, C5 III, DS3, DS4, DS5
- MINI: Clubman (R55), Countryman (R60), MINI (R56/R57/R58/R59), Paceman (R61)
- Peugeot: 207, 208, 2008, 308, 3008, 408, 508, 5008, RCZ, Partner, Tepee

suitable for the following engine codes:

- BMW N13
- MINI N12, N16, N18
- Citroën/Peugeot: EP3, EP3C, EP6, EP6C
- to be used as OEM:
  - BMW 119573
  - Peugeot / Citroën: 0197-3C



Item #
70036

## Straight Edge | for VAG

- for measuring and adjusting the drive shaft on multitronic gearboxes
- to be used as OEM: T40100



Item #
70034

New Items April (customers only)

## Sliding Block Fixing Tool | for BMW

- for fixing and aligning the sliding blocks in correct position when working on the camshaft or cylinder head
- for BMW models with variable valve timing
- avoids damages on the intermediate levers und further subsequent damages
- to be used as OEM 114450 - 83300495049

### suitable for the following BMW models:

- 1 (E81/E82/E87/E88)
- 1 (F20/F21)
- 2 (F22/F23/F87)
- 3 (E90/E91/E92/93)
- 3 (F30/F31/F34/F80)
- 4 (F32/F33/F36/F83/F82)
- 5 (E60/E61)
- 5 (F07/F10/F11)
- 6 (E63/E64)
- 6 (F06/F12/F13)
- 7 (E65/E66/E67)
- 7 (F01/F02/F03/F04)
- X1 (E84)
- X3 (E83)
- X3 (F25)
- X4 (F26)
- X5 (E70)
- X5 (F15/F86)
- X6 (F16/F86)
- Z4 (E85/E86/E89)

### suitable for the following engine codes:

- N20, N26, N51, N52, N55



Item #
--------

70038
-------

## Adaptor No. 23 for BGS 8027, 8098 | for VAG

- for VAG models and expansion tank with internal thread M62 x 3 mm
- adaptor external thread: M62 x 3 mm

### suitable for:

- Audi
- Seat
- Skoda
- Porsche Carrera
- Volkswagen

Item #
--------

8027-23
---------



## Hose Clamp Pliers for Turbo Charger Hose Clips | for VAG

- suitable for specialised turbo charger hose clips
- for safe assembling and disassembling of the air hose on the turbo charger
- ratchet locking function
- opens through spring mechanism
- dip coated handles

### suitable for the following models:

- Passat 2.0 TDI
- Touran
- Golf V
- Audi A3
- Skoda Octavia



Item #
70015

## BGS Baseball Cap | with LED Lamp

- main material: 100% cotton
- head circumference: 58 cm
- lamp: 5 LEDs in the edge of the brim
- brightness: 15000 - 17000 mcd
- batteries: 2 CR2032
- working time: 12 - 20 hours, then slowly darkening



Item #
9897



## Ratchet Combination Wrench Set | reversible | 8 - 19 mm | 12 pcs.

- fine tooth with 72 teeth
- jaw 15°
- ring side offset at 15°
- surface finish: polished chromed metal
- ratcheting combination wrenches, switchable, 8 - 9 - 10 - 11 - 12 - 13 - 14 - 15 - 16 - 17 - 18 - 19 mm



Item #
30008



## Hammer Set with Interchangeable Heads | Ø 43 mm | 9 pcs

- with interchangeable heads made of different materials
- robust and wear-resistant
- hammer head width: 103 mm
- length: 323 mm
- 6 exchangeable round heads with diameter 43 mm, material:
  - 1 nylon, white
  - 1 thermoplastic rubber (TPR), blue
  - 2 thermoplastic rubber (TPR), black
  - 1 polyurethane (PU), yellow
  - 1 polypropylen (PP), red
- 2 exchangeable square heads with dimensions 43 x 43 mm, material:
  - 1 thermoplastic rubber (TPR), blue
  - 1 polyurethane (PU), yellow



Item #
52101

## Colour Stirrer and Pug Mill Set | 3 pcs.

- for mixing mortar and stirring paints of low and high viscosity
- suitable for the following container sizes:
  - mortar mixer: 5 - 10 kg
  - painter mixer: - 1 kg
- surface finish: galvanized

### scope of delivery:

- 1 mortar mixer, Ø 60 mm, length 395 mm, hexagonal shaft 7.7 mm
- 1 mortar mixer, Ø 77 mm, length 395 mm, hexagonal shaft 7.7 mm
- 1 paint mixer with plastic head (PVC), Ø 60 mm, length 355 mm, round shaft 6 mm



Item #
6840





## Rubber Protection Cap | for Stoning Hammer | 1000 g

- for clipping on stoning hammerhead (1000 g)
- for use as a rubber mallet, soft face hammer, mallet hammer
- for gentle and noise-insulated hammering
- suitable for stoning hammer BGS 1847
- color: black
- dimensions inside: 38.5 x 38.5 mm
- dimensions outside: 72 x 72 mm

Item #
91847



New Items April (customers only)