

Tool Tray 3/3: Hammer, Pliers, Pin Punch Set | 17 pcs.

- tool tray made from high-resistance foam
- height of the insert without tools: 32 mm
- suitable for all BGS workshop trolleys
- dimensions (w x d x h): 567 x 408 x 35 mm

scope of delivery:

- 1 circlip pliers | straight | for inside circlips | 175 mm (BGS 447-2)
- 1 circlip pliers | straight | for outside circlips | 175 mm (BGS 447-3)
- 1 circlip pliers | angled | for inside circlips | 175 mm (BGS 447-4)
- 1 circlip pliers | angled | for outside circlips | 175 mm (BGS 447-1)
- 1 swedish type diagonal side cutter | 165 mm (BGS 393)
- 1 long nose pliers | straight | 200 mm (BGS 389)
- 1 bent nose pliers | 200 mm (BGS 373)
- 1 combination pliers (BGS 370)
- 1 water pump pliers | box-joint type | 240 mm (BGS 75111)
- 1 machinist's hammer | fibreglas shaft | DIN 1041 | 500 g (BGS 3854)
- 1 locking grip pliers | with vinyl release lever | 250 mm (BGS 4491)
- 1 pin punch | 150 mm | 3 mm (BGS 1651-3)
- 1 pin punch | 150 mm | 4 mm (BGS 1651-4)
- 1 pin punch | 150 mm | 5 mm (BGS 1651-5)
- 1 pin punch | 150 mm | 6 mm (BGS 1651-6)
- 1 pin punch | 150 mm | 7 mm (BGS 1651-7)
- 1 pin punch | 150 mm | 8 mm (BGS 1651-8)



Item #
4009



Machinist's Hammer Set | Fibreglas Shaft | DIN 1041 | 300 / 500 / 800 g | 3 pcs.

- for hammering in nails, dowels in almost all areas
- for universal use
- forged steel version
- head coating made from structured powder baked lacquer
- impact area surfaces inductively hardened
- surface ground polished
- rubber handle for secure grip
- DIN standard: 1041
- length: 310 / 345 / 365 mm
- stem length: 285 / 315 / 330 mm
- handle type: fibreglas
- handle type: 2-component handle
- head weight: 300 / 500 / 800 g
- head length: 105 / 120 / 130 mm
- color head: black, lacquered
- material hammer head: carbon steel (C45)

scope of delivery:

- 1 Machinist's Hammer Fibreglas Shaft | DIN 1041 | 300 g (BGS 3852)
- 1 Machinist's Hammer Fibreglas Shaft | DIN 1041 | 500 g (BGS 3854)
- 1 Machinist's Hammer Fibreglas Shaft | DIN 1041 | 800 g (BGS 3855)



Item #
3845

Common Rail High Pressure Tester

- for testing the high pressure on common rail systems
- determined pressure values allow a condition assessment of the high pressure pump, pressure regulator and injectors
- in conjunction with an OBD reader, the status of the pressure sensor can also be determined
- suitable for common rail systems Bosch CP1 / CP3, Siemens DCP1 / DCP2, Delphi DFP1 / DFP3, Denso HP1 / HP2 / HP3

Scope of delivery:

- 1 pressure gauge, 0 - 2000 bar
- 4 measuring hoses, 500 mm
- 2 hose adaptors, M12 x 1.5
- 2 hose adaptors, M14 x 1.5
- 6 blind plugs, M12 x 1.5
- 6 blind plugs, M14 x 1.5
- 1 diesel collecting bottle



Item #
62611

Brake Pressure Test Gauge Set

- to test the hydraulic brake pressure directly on the wheel brake cylinder, brake caliper, master cylinder or the hydraulic pump unit on Teves ABS systems with pressure accumulator
- allows to measure pressure differences of both brake circuits

scope of delivery:

- 2 pressure gauges with hose 0 - 255 kg/cm² (0 - 25 Mpa)
- 1 adaptor for Teves ABS with pressure accumulator
- 1 angle adaptor 90 degree
- 1 angle adaptor 45 degree
- 2 fittings 7/16" - 24 mm
- 2 fittings 1/4" - 28 mm
- 2 fittings 3/8" - 24 mm
- 2 fittings 5/16" - 24 mm
- 2 fittings 7/16" - 20 mm
- 2 fittings M7 x 1.0
- 2 fittings M8 x 1.25
- 2 fittings M10 x 1.5
- 2 fittings M10 x 1.0
- 1 thread adaptor



Item #
1271

Air Suction Oil Drainer with Waste Oil Drain Receiver | 80 l

- for collecting, sucking off, transporting and disposing of engine, transmission and rear axle oil
- complete solution for changing the oil in the workshop or garage
- with a large 80 liter tank
- height-adjustable waste oil drain receiver
- high mobility with two swivel castors
- easy reading of the fill level through the transparent measuring container
- including flexible suction probes

- oil tank volume: 80 l
- working pressure: 8 to 10 bar
- vacuum: 0 to -0.8 bar
- glass cylinder volume: 10 l
- medium temperature: 60 - 100 °C
- dipstick probe: Ø 6 x 4.5 mm
- oil suction rate: 0.4 - 0.8 l/min
- dipstick probe: Ø 8 x 6.5 mm
- oil suction rate: 1.0 - 1.6 l/min
- suction hose length: 1.5 m
- drain hose length: 1.5 m
- net weight: 24 kg



Item #
7003

COB LED Workshop Lamp with Magnet and Hook

- for perfect illumination of dark work areas
- ABS plastic housing with roughened, rubberized surface for secure holding of the lamp
- 2 fold-out and 360° swiveling hooks on the back of the housing
- 180° rotatable handle lockable in 8 steps
- LED charging indicator on the backside of the housing (red / green)
- with hooks for fixing the lamp in many places
- strong magnet on base and two magnets on the backside allow holding fix on most metallic surfaces
- switchable from main to top light

- LED type (main light): COB LED
- LED type (top light): SMD LED
- brightness (main light): 400 lumens
- brightness (top light): 120 lumens
- operating time (main light): approx. 3 hours
- operating time (top light): approx. 9 hours
- accumulator type: li-ion
- accumulator voltage: 3.7 V
- accumulator power (electric charge): 2800 mAh
- charging time: approx. 3.5 hours
- charging input: 5 V 1 A (Micro-USB)
- dimensions: 254 x 45 x 55 mm
- weight: 310 g
- protection degree: IP54
- operating temperature: -10 °C to +40 °C



Item #
85345



Hydraulic Bottle Jack | with Double Piston | 5 t

- for lifting vehicles, machines, trailers and mobile homes
- ideal for changing tires, repair work or breakdowns
- with safety valve
- including plug-in telescopic piston rod
- massive, welded steel construction
- high stability and stability thanks to a large base plate
- for high vehicle weights
- compact design
- with dual piston and high lifting range
- applicable in tight spaces

- load bearing capacity: 5 t
- lifting height: 280 mm
- height: 220 mm
- height: 500 mm
- plunger diameter: 45 | 32 mm
- holding plate diameter: 41 mm
- base plate dimensions (W x D x H): 135 x 130 mm
- handle total length: 580 mm
- handle (diameter x length x thickness): 21.8 x 220 x 2.2 | 25.5 x 220 x 1.5 | 21.8 x 220 x 2.2 mm
- handle material thickness: 2.2 | 1.5 | 2.2 mm
- weight (without handle): 7.20 kg



Item #
70042

Car Ramp Set | Plastic | extra high | 2 pcs.

- heavy duty and robust design
- plug-in unit, 2-parts each, saving space during transport and storage
- can be used on front or rear tires
- light and sturdy holding the weight of the car safely
- extra large drive-on width, for tyres up to 230 mm width
- dimensions: 900 x 310 x 180 (+35) mm
- material: plastic
- load capacity: 3 t
- to be used in pairs only



Item #

3037

Scaffolding Ratchet | 3-in-1 | 19 x 22 mm

- reversible
- versatile 3-in-1 with three functions
- drop forged
- with hammer head on both sides
- pointed handle
- helps to avoid the change of tools through more added functions
- no. of teeth in ratchet head: 24
- length: 310 mm
- material: carbon-steel (C45)
- wrench size: 19 x 22 mm



Item #

70910

Hard-Top tool case attachment | 2 Drawers | for BGS 2002

- suitable for tool trolley | mobile (BGS 2002)
- sturdy hard case made of impact-resistant plastic and sheet steel
- multifunctional for different stowage options
- with two drawers
- can be closed at the side with two notches
- 1 plastic handle, foldable
- number of drawers: 2
- dimensions (w x h x d): 495 x 230 x 177 mm
- internal drawer dimensions (w x h x d): 390 x 210 x 60 mm



Item #

2002-3

Socket, 12-point | 12.5 mm (1/2") Drive | 12.5 mm

12.5  1/2

- knurled
- drive profile: square socket
- drive profile size, metric: 12.5 mm
- drive profile size, imperial: 1/2"
- output profile: 12-point
- spanner size: 12.5 mm (1/2")
- surface finish: chrome-plated, matt

Item #
10822



Socket for variable Camshaft Timing | for BMW, MINI, Ford

- for loosening and tightening the BMW MINI Vanos unit and Ford VCT module
- suitable for:
 - BMW MINI 1.2 / 1.5 / 2.0 L petrol (B36, B38, B48, B36, B38, B46, B48, B58, M1DA, M1DC, M1DD, M1DH, M2DA, M2DB, M2DC)
 - Ford 1.0 Ecoboost (SFDB)
- to be used as OEM:
 - Ford 303-1661-3
 - BMW 2 450 487
- material: chrome molybdenum steel
- surface finish: black phosphate finish
- drive profile: internal square
- drive profile size: 12.5 mm (1/2")
- output profile: internal double octagon
- output profile size: 22 mm
- length: 30 mm

Item #
70930



Oil Filling Funnel Set | with flexible pipe and hose | Ø 135 mm | 3 pcs.

- suitable for filling with most workshop engine oils
- with funnel sieve
- high overflow rim
- with flexible outlet pipe and transparent hose
- material: plastic
- hopper diameter: 135 mm
- hose length: 760 mm
- flexible filler neck length: 375 mm

Item #
6866



New Items October 2021

Compressed Air Pressure Reducer | max. 10 to 6.2 bar

- supplies a constant 6.2 bar outlet pressure regardless of the inlet pressure
- prevents excessive operating pressure and is suitable for most pneumatic tools
- saves energy and increases the service life of compressed air tools
- light and compact design
- no additional pressure gauge required

- inlet pressure max.: 10 bar (145 PSI)
- outlet pressure: constant 6.2 bar (90 PSI)
- accuracy: 10 %
- flow rate: 1300 l/min (45 CFM)
- inlet thread: 6.3 mm (1/4")
- outlet thread: 6.3 mm (1/4")
- length: 61 mm



Item #
70185

Car Body Alignment Claw | two pulling directions | max. 5 t

- for car body repairs
- extremely versatile
- with integrated spring mechanism to increase the holding force
- claw width: 40 mm
- drawbar eye opening: 41 x 33 mm
- clamping depth: 1.7 - 2.5 mm
- fixing bolt: M16 x 2.0
- drive profile: external hexagon
- drive profile size: 24 mm



Item #
7022

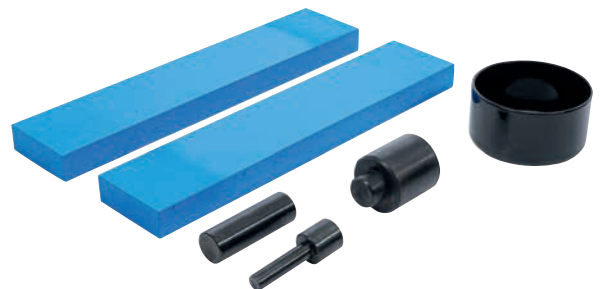
Accessory Set for Workshop Presses

- accessory set for workshop presses
- helpful when pressing out bearings, bolts, bushings, etc.
- suitable for workshop presses up to 50 tons

scope of delivery:

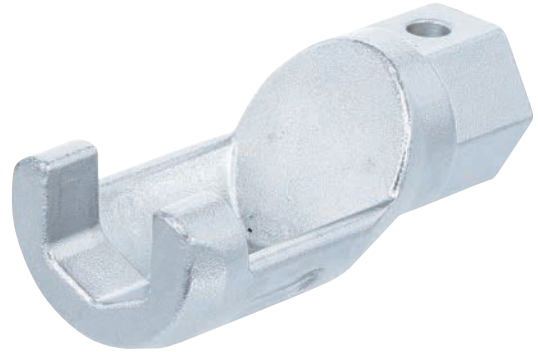
- 3 punches: Ø 12.5 mm (1/2") | Ø 25 mm (1") | Ø 50 mm (2")
- 2 steel plates: 355 mm (14") x 75 mm (3") x 50 mm (2")
- 1 bearing shield

Item #
9894



Valve Adjusting Tool | for Mercedes-Benz M100, 110, 114, 115, 123, 130

- for adjusting the valve drive on older petrol engines
- can also be used with torque wrenches
- suitable for:
 - Mercedes-Benz engines M100, 110, 114, 115, 123, 130
- drive profile: internal square 12.5 mm (1/2") / external hexagon 21 mm
- output profile: 17 mm
- material: chrome molybdenum steel
- surface finish: chrome plated



Item #
70967



Outer Deburrer | for Ø 3 - 19 mm

- for deburring round rods, threaded rods, screws, tubes and more
- suitable for steel, hard plastic and brass
- suitable for pipes with a diameter of Ø 3 to 19 mm
- max. speed: 400 rpm
- material cutting insert: HSS
- drive profile: 6-point
- drive profile size: 6.3 mm (1/4")

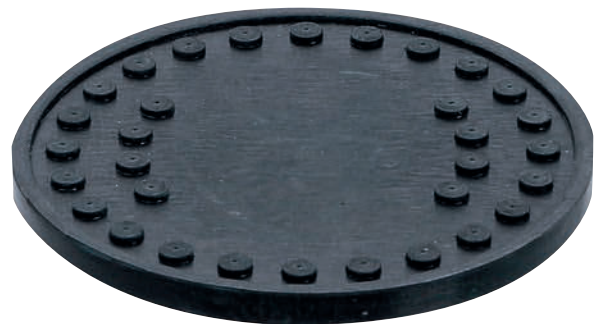


Item #
6773-1



Replacement Rubber Pad | for BGS 2897

- suitable for BGS 2897



Item #
2897-2

Impact Spindle for Drive Shaft Puller | for BGS 7681

- with movable striker
- suitable for the use with the hydraulic drive shaft puller set BGS 7681
- drive profile: external hexagon
- drive profile size, metric: 30 mm
- length: 285 mm
- thread: 1 1/2" x 16G



Item #
70223

Empty Wallet for BGS 379

- practical nylon pouch for brush set BGS 379

Item #
379-LEER



Common Rail Diagnosis Kit | with 32 Adaptors

- flow back volume can be determined via glass tubes or measuring cups
- for common rail engines, up to 8 injectors
- suitable for various injector brands

scope of delivery:

- includes 8 glass tubes
- 8 measurement cups with connecting hose, mounted on aluminium bar with hook
- 32 adaptors for:
 - Denso C3, C1
 - Siemens C3
 - Delphi
 - Bosch



Item #
98106

Vacuum Pump / Brake Bleeder Tool

- for checking components of the vacuum system, e. g. MAP sensors, valves, hoses, etc.
- also suitable for bleeding brake and clutch systems
- connecting hoses, bleeding containers, hose connectors and adaptors
- negative pressure max.: 0.7 bar
- hose length: 580 mm



Item #
70205

Screwdriver Set | 5 pcs.

- magnetic tips
- end-to-end blades with external hexagon for use with a spanner or socket
- for easy loosening of stuck screws

scope of delivery:

- 1 screwdriver, PZ1, blade length 75 mm
- 1 screwdriver, PZ2, blade length 100 mm
- 1 screwdriver, slot (SL) 5 mm, blade length 75 mm
- 1 screwdriver, slot (SL) 6 mm, blade length 100 mm
- 1 screwdriver, slot (SL) 8 mm, blade length 150 mm



Item #
35840



Double Ended Ratchet Wrench with Adaptor Set | 8 - 19 mm | 6 pcs.

- 7-in-1 multifunctional use with a double ratchet ring spanner and 5 adapters
- exchangeable adapters for quick and uncomplicated work
- easy to store and always close at hand
- convenient and safe to use
- reduces weight and saves space
- fine-toothed ratchet
- material double ratchet ring spanner: tool steel
- material adapter: chrome-vanadium steel
- teeth: 72
- output profile: 12-pt.

scope of delivery:

- 1 ratchet wrench adapter 8 mm
- 1 ratchet wrench adapter 10 mm
- 1 ratchet wrench adapter 12 mm
- 1 ratchet wrench adapter 13 mm
- 1 ratchet wrench adapter 17 mm
- 1 double ratchet wrench 14 x 19 mm




Item #	
71016	 

Mini-Claw Hammer | Stubby | 250 g

- well suited for hard to reach areas
- robust design
- ideal for pulling and hammering nails
- curved claws allow maximum leverage
- good hardness and impact resistance
- hammer head ground and polished
- fibreglass handle with rubber cover
- ergonomic, shock-absorbing handle shape
- serrated surface for secure grip
- hanging hole for easy storage

- head weight: 250 g
- colour head/heads: grinded, polished
- material hammer head: carbon steel (C45)
- material handle: fibreglass
- handle length: 120 mm
- total length: 160 mm
- head length: 107 mm
- head diameter Ø: 25 mm
- claw opening: 25 mm
- handle type: 2 component handle



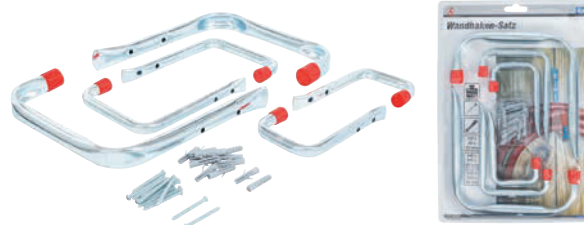
Item #	
91868	

Wall Hook Assortment | 6-pcs.

- universal hook for garages, huts, storage rooms, basement floor, etc.
- suitable as ladder hook, device hanger, shovel holder
- tube ends sealed with plastic end caps
- made of sturdy tube (Ø 12 and 18 mm)
- safe and easy attachment for wall mounting with 2 pre-drilled screw holes
- assembling material
- material: steel
- surface finish: galvanized
- capacity: 15 / 25 kg when using the enclosed fastening material in concrete

scope of delivery:

- 2 wall hooks, 123 x 82 x 12 mm, max. capacity 25 kg
- 2 wall hooks, 145 x 115 x 12 mm, max. capacity 15 kg
- 2 wall hooks, 205 x 200 x 18 mm, max. capacity 15 kg
- 12 screws, PH2, 4 x 40 mm
- 12 dowels, 6 x 30 mm



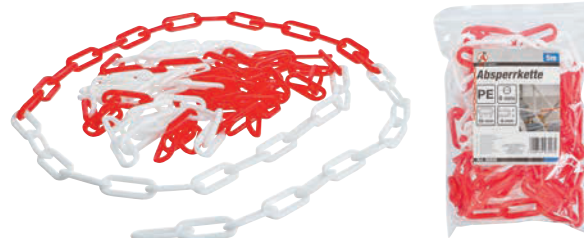
Item #
88300



Barrier Chain | Red and White | Plastic | 5 m

- suitable for various areas of application for cordoning off, securing and marking
- can also be used as a rain drainage chain to be attached to the water drain
- for indoor and outdoor use
- weather- and UV-resistant, can be driven over and cold-resistant down to -25 °C

- material: high density polyethylene (HDPE)
- material thickness: 6 mm
- link width: 8 mm
- link length: 39 mm
- total length: 5 m



Item #
80809



Hole Saw | Ø 68 mm | depth 40 mm

- for drilling holes in carbon steel, stainless steel, cast iron, brass, aluminum and wood
- made of strong, break-proof and stable material to create breakthroughs
- right-hand cutting
- variable tooth pitch (4/6 tooth)
- high concentricity accuracy
- good chip removal
- to be used with cordless or electric hand drills
- suitable for holesaw attachment bracket, with pilot drill (BGS 50399)

- material: HSS Bi metal (5 % cobalt alloy)
- female thread: M16 x 1.5
- cutting depth up to max.: 40 mm
- max. drive speed carbon steel: 130 r.p.m.
- max. drive speed stainless steel: 65 r.p.m.
- max. drive speed cast iron: 85 r.p.m.
- max. drive speed brass: 170 r.p.m.
- max. drive speed aluminum: 195 r.p.m.
- max. drive speed wood: 1800 r.p.m.



Item #
50368



Hole Saw Holder | with Pilot Drill

- center drill for easy drilling and guiding the hole saw into the correct position
- for hole saws with Ø: 33 - 152 mm
- to be used with cordless or electric hand drilling machines
- suitable for hole saw Ø 68 mm depth 40 mm

- external hexagon drive: 11 mm
- total length: 120 mm
- material pilot drill: HSS
- diameter pilot drill: 6 mm
- female thread: M16 x 1.5



Item #
50399



Empty Case for BGS 6653

- suitable for torque wrench BGS 6653



Item #
6653-LEER